



‘Gentleman Scientist’ Ushers In Growing Crowds

by Kara Edie

After months of planning and weeks of careful installation, *Lew Wallace—Gentleman Scientist*, the new interactive exhibit at the General Lew Wallace Study and Museum, has finally opened to wide public acclaim.

The sneak preview party, open to members of the Lew Wallace Study Preservation Society, was held on Friday, March 28, at the Museum and at the former Wallace home in Crawfordsville. Members enjoyed a wine and cheese reception while learning about the new exhibit from Museum Director Cinnamon Catlin-Legutko. “We are so grateful to our Science Advisory Committee for helping us

conceptualize this exhibit,” said Catlin-Legutko in her remarks. “The staff and I have been engaged with this exhibit since last year,

bers moved to the Carriage House Interpretive Center, which had been transformed into a creative workshop dedicated to Wallace’s

achievements in the realms of invention, innovation and the natural world. Large-scale vinyl images of Wallace’s patent drawings now hang on the walls, next to some of his inspiring quotations. Artifacts from Wallace’s avocation as an inventor sit side by side with his fishing equipment and original materials he used in the construction of his unique Study building. A special Creativity Station invites both children and their families to design and build their own structures out of Lego® blocks, or to draw their own inventions and have them “patented”



Sneak Preview: Gordon and Lucinda Huffaker inspect one of the hands-on artifacts at the *Lew Wallace—Gentleman Scientist* exhibit, on display in the Carriage House Interpretive Center until mid-December.

and it’s very gratifying to see it come to fruition.” After the reception, mem-

bers moved to the Carriage House Interpretive Center, which had been transformed into a creative workshop dedicated to Wallace’s

Inside This Issue

Director’s Notes	2
Upcoming Youth Academy	3
Study Electrified	4
Spring Garden Update	5
Internship Success	5
Bands Selected for Taste	6
From the Gift Shop	7
Study Briefs	7
Upcoming Events	8

Our Mission

The General Lew Wallace Study and Museum celebrates and renews belief in the power of the individual spirit to affect American history and culture.

Notes from the Director



Cinnamon Catlin-Legutko
Museum Director

Spring is finally here in Crawfordsville and the Museum grounds are truly beautiful yet again. Each year is a thrill to see what will bloom and grow and how visitors

respond to our meticulous stewardship of Wallace's legacy.

This year is an important year for the Museum as we begin to look ahead at the next five years and consider what the organization will look like, who our visitors will be, and what goals we will meet. Over the summer the Museum board and I will meet during three separate retreats to consider our new ambitious agenda. What will be on the agenda? What resources will it take to reach our new goals? Before we meet in the board room, we will be asking you what you would like to see the museum do in the next five years. How can we be of better service and enrichment to you?

To get the ball rolling, our strategic planner, Herm Haffner of Total Solutions, and I developed five core competencies that we believe the Museum does really well. These competencies will inform our strategic goals so we need to make sure we get this right. I would love to hear what you think about these core competencies. Do you agree? Is there something else we do as well or better? If one of these competencies were not listed, could we still do our job? It is through conversations and partnerships with our constituents that we will do our best work and make a difference in the community and beyond. If you would like to comment on this list of five competencies, please email me at clegutko@ben-hur.com.

General Lew Wallace Study and Museum Core Competencies

1. We know General Lew Wallace and we make him relevant.

2. We are really good at articulating our message.

3. We possess expertise in the small museum field.

4. We are creative and innovative, and we execute the project.

5. We are obsessed with the visitor experience.

Early this summer we will be contacting many of you directly through the mail (and some of you by phone) asking you to offer suggestions, insights, and ideas about directions we need to take and problems we need to resolve as the gem of Crawfordsville and as a significant historic site in America. You are our stakeholders and we value what you have to say. I look forward to the conversation.

Cinnamon Catlin-Legutko

Gentleman Scientist, continued

continued from page 1

by staff with a specialized Museum seal embosser.

Another exciting addition to the new exhibit is the collection of backpacks filled with binoculars, field guides and drawing supplies that visitors can check out and utilize on the Museum's shady grounds to become a true nature observer. Instructions are included on methods of bird watching, identifying trees, and more.

The public opening of the *Gentleman Scientist* exhibit took place on Saturday, March 29, and a brisk day full

of bright sunshine greeted visitors from throughout the region as they came to the Museum. "Visitation is up markedly since the beginning of March," said Museum Associate Director Amanda Wesselmann. "We had quite a crowd today, coming to see both the new exhibit and the Study. We hope this momentum carries throughout the exhibit year."

The upcoming year features events and educational programming that complement the *Gentleman Scientist* theme, including community favorites the Lew Wallace Youth

Academy and the second-annual Taste of Montgomery County. The next events in the 2008 exhibit year are the meeting of the Brown Bag Book Club on Wednesday, June 4, discussing the bestseller [The Devil in the White City](#); and the Flower Lovers' 10th Annual Garden Walk on Sunday, June 22, which begins on the Museum's beautiful blooming grounds and features a plant auction. For further information on these or our other upcoming events, contact the Museum at 765-362-5769 or visit our website at www.ben-hur.com.

Youth Academy Readies for Fourth Year

By Amanda Wesselmann

The Lew Wallace Youth Academy (July 8-12, 2008) will again be featured as a prominent part of the summer's programming. This day camp for students 11-14 years old features half-day workshops that provide direct hands-on experience learning about themselves and the world around them through the lens of Lew Wallace's life. Themes this year include Exploring Other Cultures, Sharing Stories, Creating Art, Solving Problems, and Serving Others. Many of the faculty from previous years are returning to lead sessions again. "I'd love to be a part of it again," said Sean Gerold, a teacher at Crawfordsville High School. "I enjoy that day every year." Sean is among those who have been a part of the Academy since the beginning, as well as Tracy Smoll, Dr. Helen Hudson, Dr. Jamey Norton, and Jim Swift. Dr. James Makubuya, who joined the program in 2007, will also return this year.

A new addition this year is a partnership with Mid-States Living History Association, Inc. This group of first-person interpreters has created a custom presentation of the Civil War for the Academy – and the public after the Academy ends – based on research using primary documents. Featured aspects include an officer's tent with an interpreter portraying Lew Wallace, infantry tents, a field hospital, a "School of the Piece" artillery education station, and a genuine telegraph to fit with our annual theme of *Lew Wallace – Gentleman Scientist*. "When we first found out about Mid-States, we thought they would add to the students' understanding of what it was like for Lew and the soldiers that served under him during the Civil War," said Museum Director Cinnamon Catlin-Legutko. "We thought it would provide them with a good view of what it meant to serve

your country during that time."

Students who participate will experience a variety of activities throughout the workshops. Academy faculty and Museum staff work to fill each day with activities suited for the age group that address the daily theme. Other aspects incorporated include public speaking and Character Counts! pillars. Scheduled activities include:

Exploring Other Cultures: Participants will learn about Lew and Susan Wallace's world travels finding objects they collected in the Study. Next, they will get a chance to experience



Finding the Beat: 2007 Lew Wallace Youth Academy students learn how to play authentic African drums.

other cultures through African languages and music, including playing drums, singing in different languages, and dancing a traditional dance.

Sharing Stories: Participants will develop their writing talents modeled after Lew Wallace's writing habits. Working individually and in small groups, they will create a scene on the grounds and revise their work, sharing their final draft at the end of the workshop.

Creating Art: Participants will learn characteristics of paintings and how to criticize a work of art constructively. Then, students will create their

own works of art on the grounds by painting the subject of their choice with oil paints.

Solving Problems: Participants will interact with a local architect, a landscape surveyor and Wallace scholars to learn how Lew Wallace solved problems through his design of the Study and grounds and his nine inventions. Then they will design and/or build models of spaces for exploring their favorite activities, just as Lew Wallace did in the design of his Study.

Serving Others: Participants will interact with soldiers and officers from the Civil War as portrayed by first-person interpreters from Mid-States Living History Association, Inc. After the graduation ceremonies, they will share what they've learned in the Academy with family and friends.

Open enrollment for the Academy begins June 1. Registration forms are available upon request, and the registration fee is \$25. To preserve the hands-on experience inherent to the program, the Academy is limited to 25 students on a first-come, first-served

basis. For more information, contact Amanda Wesselmann at 765/362-5769 or awesselmann@ben-hur.com. This program is made possible through a matching grant from the Indiana Humanities Council in cooperation with the National Endowment for the Humanities, and community organizations, including American Legion Byron Cox Post 72, Character Counts, Delta Theta Tau Sorority Inc., Fraternal Order of Eagles Aerie #1005, Loyal Order of Moose Lodge 6, Mike Scime, Montgomery County Extension Homemakers, Montgomery County Retired Teachers Association, Psi Iota Xi – Gamma Xi Chapter, and Sugar Creek Kiwanis.

‘Enlightened’ Wallace Includes Electricity in Study

By Thomas Sarver

One of the more interesting architectural features of the Lew Wallace Study is the series of electric lights around the skylight and the top of the walls. Wallace also installed gas lights to illuminate the interior of the study if the electricity became unavailable. During the mid- to late-nineteenth century, gas was the primary utility to light a Victorian-style home. However, with Thomas Edison’s invention of the incandescent light bulb in 1879, homeowners began wiring their homes for electricity as a cleaner energy alternative. The City of Crawfordsville opened its first power station in 1891, and Wallace took advantage of the city’s new power supply and wired the Study for the rising energy source.

On September 26, 1896 the Crawfordsville Review reported that the study would be lighted by electricity. According to Wallace’s receipt book, he hired Sandborn Electric Company of Indianapolis to wire the Study, paying the company \$150.00 on September 23, 1896 and \$200.00 on October 14, 1897. The electrical connection to the city was done locally by a Mr. Brown and H. W. Niestadt. Wallace’s receipt book shows a payment to Brown for \$32.23 on May 21, 1897 and three payments to Niestadt, an electrician, for \$6.85 on August

14, 1897, and two \$5.00 payments on April 7 and May 4, 1898 respectively.

When Wallace conceived the Study’s lighting, he wanted 100 lights. There are 48 lights contained within the decorative plaster cornice encompassing the top of the Study’s walls. Around the skylight are 24 other lights. Below the cornice are a tier of jointed, brass Edison lights, which extend from the wall and consist of two lights with decorative glass globes. The top globe was for gas lighting, the lower globe was for electric lighting. There are two Edison lights on each wall, bringing the total to 16 lights. Wallace also installed two additional Edison lights in the inglenook (four lights) and one Edison in the small entryway (two lights). There is also a drop light from the ceiling of the anteroom, bringing the total number of original lights to 95, which is close to Wallace’s original conception.

Despite one contemporary critic referring to the Study as a “Victorian fire station,” other critics complemented Wallace’s interior lighting when visiting the study. In 1895, a visiting writer interviewing Wallace remarked that “[t]he immense study room is flooded by day with mellow light from the dome; at night it is brilliant with a score of

electric lamps of many varieties.” In April 1898, the newsletter “The Chariot” reported the effect of the electric lights as “wonderfully brilliant.” A year later, on December 10, 1899 an out-of-town newspaper reporter witnessed Wallace turning on the lights to “show the effect of the light” on the study he described as a “dream of oriental beauty and luxury.” The reporter further noted, “the casings and shelves being of oak reflected a mellow yellow light very closely resembling the daylight, so that there is little difference between artificial and natural illumination.”

Even into the twentieth century and today, people remain impressed with the lighting of the Study and Wallace’s initiative to utilize the traditional and modern forms of interior lighting. Columnist Joe Adams of the Indianapolis Star toured the study around May 1946 and noted it was “well-lighted.” After finishing his tour, Adams noted in his column that Wallace was “not only an author, an orator, an attorney, an artist, a sculptor, a diplomat and musician; he knew how to plan a building.” Based upon the compliments received by visitors today, Adams’ assessment remains true because of Wallace’s desire to utilize the latest technological and architectural advances in his unique Study design.

Study Scrapbook

Happy Birthday, General Wallace—

Kara Edie, Visitor Services and Marketing Coordinator of the General Lew Wallace Study and Museum, meets with Crawfordsville Mayor Charlie Coons as he signs a new proclamation declaring Thursday, April 10 “Lew Wallace Day” in honor of General Lew Wallace’s 181st Birthday. The Museum hosted the Lew Wallace Birthday Celebration at the Museum on the 10th, featuring refreshments, gifts, games, and a chance to plant the Lew Wallace Children’s Garden. Almost 90 guests visited the Museum on Wallace’s birthday.



Spring Brings Out The Majesty of the Museum Grounds

By Deb King

Upon entering the pedestrian gate, a visitor is immersed in a quiet woodland filled with wildflowers. Continuing along the stone pathway, the senses are bombarded by the wonderful fragrance of lily-of-the-valley (*Convallaria majalis*). Introduced to the American gardens in the early 1700's, lily-of-the-valley is a wonderful groundcover for the shady arbors of the Study.

The grounds are filled with blooming flowers wherever the eyes look. Wood violets, ragwort, alliums, wild hyacinth, and prairie trillium are just some of the flowers that make the Study grounds a nature lover's delight.

The planning is over and planting has begun in the gardens. Cannas, elephant ears, coleus, caladiums and hundreds of colorful annuals are being added to beautify the gardens.

The Study maintains a planting period reminiscent of the late 1800s. Many types of foliage plants were used along with 'common' flowers still used today. Marigolds, geraniums and salvia were as much a catalog staple in the 1800s as they are today.

This year, the Crawfordsville Flower Lovers Garden Club has invited the Study to participate in the Flower Lovers Garden Walk. Held Sunday, June 22, the Garden Walk is a showcase of gardens throughout Crawfordsville. It

is a great way to spend an afternoon seeing the many different styles of gardens. A plant sale will take place on the grounds of the Study, so come spend some time in the quiet shady splendor of the Study.



This summer finds the Carriage House and the Study in need of some much needed painting. Plans are underway for scraping, cleaning and painting of the Study windows and the exterior of

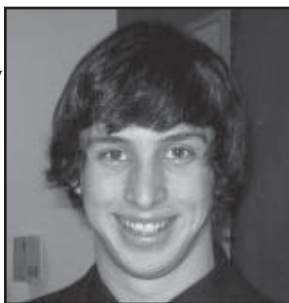
the Carriage House. Following the guidelines set up by the National Park Service (Preservation Brief #10), it is a long and involved process. It is in the best interest of the historic structure that these guidelines be followed. Sprucing up the grounds and the buildings will keep the Museum looking 'as good as new.'

Come for a visit, bring your lunch, take a peaceful stroll or stop by for an afternoon with your favorite book and take in the wonderful atmosphere of the Study.

First Academic Year Internship Mutually Beneficial

By Amanda Wesselmann

The 2007-2008 academic year made history for both the Museum and Wabash College: for the first time, internships were offered to Wabash students for the academic year. "This was so exciting," said Laura Conners, the Know Indiana Grant Coordinator at Wabash College. "After years of successful summer intern experiences, we were finally able to offer academic year opportunities to our students and internship partners." For the Museum, this means that talented students can engage in projects that take more than a few weeks to complete. Everything interns do, on the front lines and behind the scenes, contributes to meeting strategic goals and serving visitors and members.



Michael Sexton

Michael Sexton, class of 2011, signed on to digitize the records for the Museum's object collection. Michael is a philosophy major and officer in the Tau Kappa Epsilon fraternity who was pleased to work on something as important as collections records. "If I got a job this year, I'd probably be doing something like stocking shelves," Michael said. "I wanted to do something more engaging, so I applied for the internship at the Museum."

Beginning in October, Michael set about learning the terminology associated with artifact cataloguing, as well as the ins and outs of the PastPerfect database that holds all the information. Then, he began transferring information from paper

records into the database. Although the project is not yet complete, Michael's progress contributed to the intellectual control the Museum has over its collections.

Michael's internship was not all data entry. He often asked if there was any other ways he could be of assistance, and worked with staff in a variety of capacities. He painted picnic tables, prepared mailings, helped with the Holiday Tea with Susan and Zerelda, and answered visitors' questions during Lew's Birthday Celebration. "I totally plan on coming back," Michael commented before he left in May. "I'm going to apply for the internship next year, and even if I don't get it, I'll volunteer. I really enjoyed my time at the Museum."

Thank You to our Members and Donors!

*The Museum would like to thank several new and renewing members and annual fund donors who gave between February 26 and May 23, 2008. Their generous gifts help us with preservation efforts, general operations, and educational programming. Thank you for your support! **New members are denoted in bold.***

New and Renewing Members

Roger and Jennifer Adams, Mike and Patience P. and James J. Barnes, Austin and Lucy Brooks, Rusty and Kathy Carter, James D. Collier, Hubert and Dorothy Danzebrink, Robert and Marcheta Dixon, Vern and Barb Easterling, James and Lorena Elmore, Joe and Sara Emmick, Bob and Barbara Ferling, John and Joan Freeman, Tamara and Scott Hemmerlein, Helen and Marc Hudson, Tobey and Peggy Herzog, Larry and Cinnamon Legutko, Irmingard McKinney, Edward and Maria McLean, Dr. Scott Molin, Jamey and Diane Norton, **Katie Pace**, Ed Pease, **Julie and Mike Raters**, Harry and Suzanne Siamas, Dean and Tracy Smoll, John and Gail Stephens, Tri-County Bank, Amanda and Eric Wesselmann, Dr. and Mrs. C. Richard Walker, Rodger and Machiel Walther,

Leslie Warren, and David and Virginia Wilcox.

Endowment Gifts

Dan and Margaret Edie, Chuck and Karen Fiedler, Lester and Mae Lowe, Irmingard McKinney, Dale and Linda Petrie, and John and Clara Wooten.

Annual Fund Donors

William and Rebecca Degitz, Dan and Margaret Edie, Chuck and Karen Fiedler, Tom and Cheryl Fuhrmann, Pierce and Billie Green, Terry Lawrence, Irmingard McKinney, Ellen and Owen Mock, www.shopformuseums.com, and Dean and Tracy Smoll.

Adopt-A-Spot Members

Rusty and Kathy Carter, Barb and Steve Carver, The Iron Gate (Paul & Susie Moehling), Brian Keim Lawn Service, Brian and Cheryl Keim, Suanne C. Milligan, Montgomery County Convention and Visitors Bureau, and Oz Orchids.

Taste of Montgomery County Sponsors

Title Level – St. Clare Medical Center, Montgomery County Convention &

Visitors Bureau, Wal-Mart, The Strawberry Festival, mediumFusion Creative Group

Contributor Level – Nucor Steel, FC Tucker/Carter-Hess Group, Acuity Brands, CS Oats Accountancy Corp, Pace Dairy Foods, Rumors Bar & Grill

Supporter Level – Banjo, Indiana American Water, Kwik Kopy Printing, Edward Jones, The Juniper Spoon, Joey's Main Street Café, Hay-Bush Mechanical, National City, Crawford Industries, RR Donnelley, McCormick-Metsker Agency, Superior Moving & Storage

Special Grants



\$17,500



\$72,517 over three years



\$1200

Bands Selected for 2nd Taste of Montgomery County

Three of the most notable musical acts in the region have been selected to bring the tunes back for a second helping of the Taste.

The Taste of Montgomery County, now in its second year after a tremendously successful 2007, will return on Saturday, September 6 from 1:00 to 10:00 p.m. on the shady grounds of the General Lew Wallace Study and Museum, and along with its usual roster of exciting edibles, the Taste will feature an eclectic mix of music from three of the region's hottest musical acts.

The Taste Committee announced this month that the Troubadours of Divine Bliss, an acoustic folk duo from Kentucky whose spirit-filled melodies have carried them across the world, will be the first performers of this year's Taste, playing from 2:00 to 4:00 p.m. The Troubadours have been performing together for over 12 years, recorded 4 albums and were named "Best Folk Band" in 2004 by Louisville's Leo Weekly magazine.

Two-time W.C. Handy award nominee and Indiana-based bluesman Tad Robinson will bring his special blend of soulful blues to the Taste stage from 5:00 to 7:00 p.m. Robinson's smooth vocals have been well-known nationwide, and featured on motion picture soundtracks from 2006's "The Guardian", 1998's "A Perfect

Murder" and 1992's "Under Siege". His fourth solo album, "A New Point of View" is a 2008 Blues Music Award nominee.

Montgomery County residents are particularly proud of this year's final act, Steve Trent and Small Town. Based out of the Crawfordsville area, this top-40 country music act has opened for country star Mark Chestnutt and is currently recording their latest album, "The Long Road." Steve Trent and Small Town will take over our small town, hitting the Taste stage from 8:00 to 10:00 p.m.

Tickets for the Taste of Montgomery County, which features sumptuous samples of some of the area's finest cuisine as well as attendance to all three shows, will be \$4 in advance and \$5 at the gate on September 6. Food tickets will be \$1 each. Advance tickets will be available at the General Lew Wallace Study and Museum, the Montgomery County Visitors and Convention Bureau and select downtown locations starting August 1.

The Taste Committee is now accepting applications for food vendors for this year's Taste. Vendor instructions and applications are available for download on the Taste website, www.tasteofmontgomerycounty.com. For further information, visit our website or call the General Lew Wallace Study and Museum at 765-362-5769.

Study Briefs

GLWSM Continues to Gain Wide Acclaim

The General Lew Wallace Study and Museum has recently been featured in two publications that continue to expand our ever-widening circle of exposure.

The Indiana Magazine of History, one of the nation's oldest historical journals, published by the Indiana University Department of History, will focus entirely on Lew Wallace in its June 2008 issue by featuring papers presented at the Lew Wallace Symposium in November 2005. Included are "The Home of Ben-Hur: Lew Wallace's Study," by Cinnamon Catlin-Legutko; "A Struggle for Respect: Lew Wallace's Relationships with Ulysses S. Grant and William Tecumseh Sherman After Shiloh," by William M. Ferraro; and "The Charioteer and the Christ: Ben-Hur in America from the Gilded Age to the Culture Wars," by Howard Miller.

Museum Director Cinnamon Catlin-Legutko has shared her expertise in small museums with the nation in the Spring 2008 issue of *History News*, an industry magazine published by the American Association of State and Local History. Her Technical Leaflet, "DIY Strategic Planning for Small Museums," instructs readers on preparation, facilitation and formatting of strategic plans for small organizations with limited budgets.

Web 2.0

Connect with the General Lew Wallace Study and Museum online for expanded articles, color photos and up-to-the-minute event information!

Our Website

<http://www.ben-hur.com>

Our Weblog

<http://wallacestudy.blogspot.com>

Our MySpace Page

<http://www.myspace.com/lewwallacestudy>

Our Flickr Photo Page

<http://www.flickr.com/photos/lewwallacestudy/>

Our Facebook Page

<http://www.facebook.com/pages/Crawfordsville-IN/General-Lew-Wallace-Study-and-Museum/26679040992>

The Taste of Montgomery County Website

<http://www.tasteofmontgomerycounty.com>

The Taste of Montgomery County MySpace Page

<http://www.myspace.com/tasteofmontgomerycounty>

From the Gift Shop

New items are popping up like spring flowers in the General Lew Wallace Study and Museum Gift Shop! To order these or any of our Gift Shop items, visit our website at www.ben-hur.com or call the Museum at **765-362-5769**. Remember that every purchase made in our Gift Shop directly benefits the Museum, and helps to spread the Lew Wallace legacy to everyone on your gift list!



General Lew Wallace Study and Museum Logo Mug

Let the logo of your favorite museum greet you with your morning coffee. This mug is black with white speckles, white logo, and white halo.

\$7.95



Real Wood Bookmarks

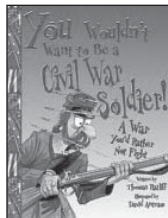
Celebrate nature with these stunning carved wooden bookmarks, with an assortment of ferns and leaves on one side, the Museum logo on the other. Specify preferred design and wood type.

\$6.50 or 2 for \$12.00

SHIPPING

Please add the following amounts for shipping and handling (Indiana residents add 7% sales tax)

Up to \$9.99—\$6.00
 \$10—\$19.99—\$7.00
 \$20—\$29.99—\$8.00
 \$30—\$39.99—\$9.00
 \$40—\$49.99—\$10.00
 \$50—\$74.99—\$11.00
 \$75—\$99.99—\$12.00
 Over \$100.00—\$15.00



You Wouldn't Want To Be A Civil War Soldier! by Thomas Ratliff

From the popular "You Wouldn't Want To..." history series for children, this paperback book takes you into the nitty-gritty of Civil War life, from the scratchy wool uniforms to the tasteless hardtack!

\$9.95



Create Your Own Parchment Document Set

Follow in Lew Wallace's footsteps with this ingenious quill pen set that includes a real feather quill, ink crystals and ink jar with cork stopper, and realistic parchment on which to write as our forefathers wrote!

\$7.00



**GENERAL LEW WALLACE
STUDY & MUSEUM**

200 Wallace Avenue

PO Box 662

Crawfordsville, Indiana 47933

Phone: 765-362-5769

Email: info@ben-hur.com

PRSRT STD
Nonprofit
US Postage Paid
Crawfordsville IN
Permit No. 8



Visit us on the web at www.ben-hur.com

Upcoming Events at GLWSM

All upcoming events take place at the General Lew Wallace Study and Museum at 200 Wallace Avenue, Crawfordsville, unless otherwise indicated. Call the Museum at 765-362-5769 for further information about any of these programs.

June 4—The Brown Bag Book Club is back! For three months, exciting discussions will revolve around great titles chosen for their relation to this year's Museum exhibit. This month's selection is the 2004 blockbuster bestseller, The Devil in the White City by Erik Larson. All books featured in the Brown Bag Book Club will be sold at the Museum's Gift Shop at a discount. Come and join this fascinating discussion from 12:00-1:00 p.m. at the Museum, and bring your lunch!

June 22—The Flower Lovers Garden Walk will be headquartered this year on the Museum's verdant grounds. Drop by the Museum for tickets and information on all other featured gardens on this year's walk.

July 2—The Brown Bag Book Club will discuss The Wizard of Menlo Park: How Thomas Alva Edison Invented the Modern World, a fascinating treatise on one of the most important inventors in American history. All books featured in the Brown Bag Book Club will be sold at the Museum's Gift Shop at a discount. Bring your lunch from 12:00-1:00 pm and enjoy the discussion!

July 8-12—The Lew Wallace Youth Academy returns for a fourth exciting year, meeting from July 8-12 from 9:00 a.m.

to 12:30 p.m. Montgomery County's brightest middle-school students gather for General Wallace's story in a week-long history day camp focusing on the qualities of character, leadership and lifelong learning that he embodied throughout his life. For enrollment information, call the Museum at 765-362-5769.

August 2—Discovery Saturday, a fascinating experience that delves into the worlds of invention, nature, and innovation with hands-on education stations located throughout General Wallace's Study, grounds, and Carriage House. Learn secrets and details of the General Lew Wallace Study and Museum that you've never heard before!

August 6—The Brown Bag Book Club will discuss Bill Bryson's A Walk in the Woods: Rediscovering America on the Appalachian Trail, a hearty celebration of America's natural gifts. All books featured in the Brown Bag Book Club will be sold at the Museum's Gift Shop at a discount. Bring your lunch from 12:00-1:00 pm and enjoy the discussion!

September 6—The second-annual Taste of Montgomery County will delight your taste buds with sumptuous delicacies from a delicious variety of local restaurants and caterers, and we'll get your feet dancing with awesome live music from three great regional bands, all on the gorgeous grounds of the General Lew Wallace Study and Museum. Our 2007 event was a gigantic success; do not miss out on this bigger, better and tastier sequel! Contact the Museum at 765-362-5769 or visit our website at www.tasteofmontgomerycounty.com for details.