



FROM THE STUDY



Join us for the 8th Annual TASTE! of Montgomery County

Stephanie Cain
Visitor Services

The eighth annual Taste of Montgomery County returns to the Study grounds on Saturday, August 23 from 12:00-10:00 p.m.

The Museum staff, Taste Committee, and other volunteers are hard at work preparing for our most successful fundraising event.

an EP recently released, the band is playing at universities and colleges across Indiana, as well as music venues and clubs in the tri-state area.

four studio albums, two live CDs, a Christmas album, and a DVD on her own label, Rubin the Cat Records. SonyRED was so impressed with her last effort, the critical-



The Taste judges and members of the committee prepare to hand out the judges choice awards at the 2013 Taste!

ly-acclaimed *Strange Sunshine*, that they offered her a distribution deal, bringing her to many new ears, while still allowing her to retain her artistic freedom.

The Taste will feature three bands. Local favorite Kenn Clark will perform from 1 - 2 p.m. Another popular regional artist, Him & Her, will perform from 3 - 5 p.m. Him & Her was formed by Joel and Tosh Everson with a focus on original songs inspired by their musical influences. These influences vary from rock to folk, funk to pop, and more. With

Our headlining musical act is Jennie DeVoe. Voted *Nuvo's* Best Local Musical Artist in 2013, Jennie is an independent singer/songwriter with a soulful-blues-Americana vibe, a performer who connects with her audience like no other. Fiercely independent, Jennie has declined numerous major label offers, and produced

In addition to the great music, local restaurants, caterers, and food vendors will serve up their most delicious delicacies on Museum grounds. Joining the Taste lineup for the first time is Crawfordsville's Barefoot Burger. Returning favorites include Iron Gate II, The General Store, Norvell's, and the

cont. on page 8

Inside This Issue

Notes from the Director	2
Making a Historic Difference	3
History Tidbit	4
Social Media Highlight	6
Collections Corner	7
From the Gardens	9
Donor Recognition	10
Study Scrapbook	11
Events Calendar	12

The General Lew Wallace Study & Museum is deeply committed to the protection and preservation of Lew Wallace's legacy now and for generations to come.

Mission

Board of Trustees**President**
Jerry Spillane**Vice President**
Tim McCormick**Treasurer**
Dale Petrie**Secretary**
Anne Moore**Ex Officio**
Fawn Johnson**Scott Busenbark****Rusty Carter****Elaine Chase****Sean Gerold****Erin Gobel****Brian Keim****Jamey Norton****Gail Stephens****Notes From The Director**

If museums, particularly house museums, are to be successful in the future, they must find a way to be relevant for their

audience and contributors to the quality of life in their communities. One of the joys of sharing Lew Wallace with our visitors is our ability to make him and his life, not just a history lesson but also something that people recognize and can relate to. So much has been recorded and researched about Lew Wallace that we can share information and stories about him as an “alternative learner” when growing up—while also discussing his passion for life-long learning, his creativity, his curiosity, and his need to learn by doing. Wallace was willing to experiment and to experience as part of his learning.

Other attributes that we share with visitors include his interest in other peoples and cultures—particularly his interest in Mexico and the Middle East. He was profoundly interested in the way people interacted, their religions, and their relationships. Speaking of relationships, we are able to discuss Wallace’s relationships as varied as his significant friendship with Sultan Abdul Hamid II and his abiding devotion to Susan and other members of his family.

It’s not possible to discuss Lew Wallace without mentioning two pivotal chapters in his life—the military and *Ben-Hur*. In each case we share insights into his passion for integrity, his patriotism and love of country, and concepts of heroism. Is this day of military interventions, political divisions, and questioned leadership, Wallace serves as an important touchstone.

Finally, we have the great joy of sharing Lew Wallace’s Study itself. While he called it a “pleasure house for his soul,” we call it an 1890s “man-cave!” Far from being a gilded palace or sterile building, the Study clearly reflects Lew’s personal tastes. He designed the building to support his hobbies and interests and our visitors develop an affection for this man who expressed himself through bricks and mortar. Our guests begin to wonder what kind of personal space they might design if money were no object!

A visit to the Lew Wallace Study & Museum is much more than a history lesson. While it is a chance to remember a significant man who lived long ago and accomplished much, it is also a chance to encourage people to think creatively about issues, embrace their passions, question their world, support their community, and just generally enjoy learning!

Museum Staff**Director****Larry Paarlberg**

765-362-5769 Ext. 101

lpaarlberg@ben-hur.com

Associate Director**Amanda McGuire**

765-362-5769 Ext. 100

amcguire@ben-hur.com

Visitor Services**Stephanie Cain**

765-362-5769 Ext. 105

scain@ben-hur.com

Grounds Manager**Deb King**

765-362-5769 Ext. 103

dking@ben-hur.com

Making A Historic Difference

Larry Paarlberg
Museum Director

We are pleased to report that thanks to the kind support of many individuals and businesses, we have reached our fundraising goal for the Making A Historic Difference campaign! In May, the Jeffris Family Foundation recognized the fulfillment of our match to the challenge grant that they awarded to the Study and we received authorization to proceed. In June, we met with officials from the Indiana Department of Natural Resources (DNR). This project is being funded in part by a grant from the U.S. Department of the Interior, National Park Service's Historic Preservation Fund administered by the Indiana Department of Natural Resources, Division of Historic

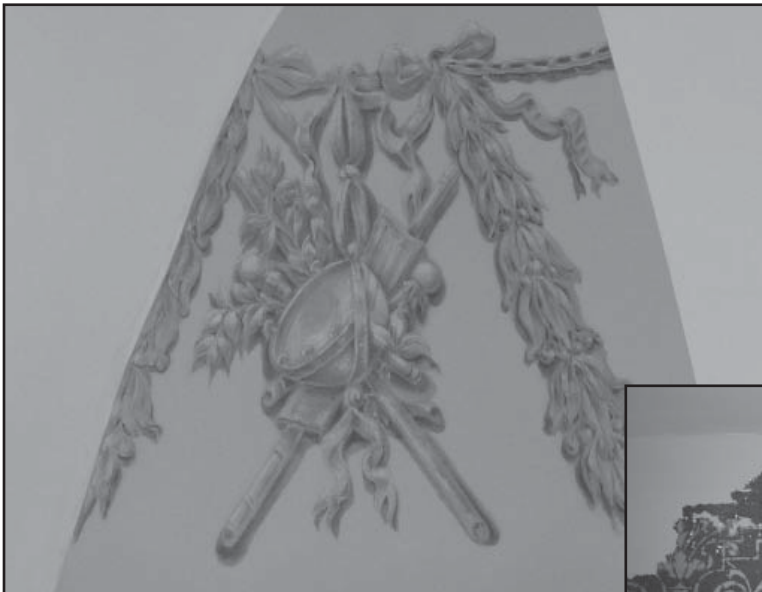
Preservation and Archaeology.

After the meeting with DNR, we had an on-site meeting with David Kroll and Ben Ross of Ratio Architects where preliminary planning was undertaken with respect to the re-wiring of the building. Follow-up work has included preliminary investigations to determine how the new wiring will be pulled through the building as gently as possible. Preservation of the original plaster and detailing is of paramount importance.

Staff is in the process of packing artifacts and removing them from the Study so the electricians and other crews can have access to the building soon. We look forward to

completing the electrical portion of the project this fall and will begin the (very exciting) restoration of the interior paint finishes immediately after that. The Study building will be closed at times for interior tours during the electrical portion of the project, but tours will be allowed inside during the paint restoration.

Please check our website and Facebook regularly for continuous updates on the project as it moves forward. This promises to be one of the most engaging restoration projects ever mounted at the Study and we hope everyone will watch our progress!



The **Jeffris** Family Foundation
Dedicated to Midwestern Historic Preservation

William Noble “Tee” Wallace

Larry Paarlberg

Museum Director

In many families there are mysteries to be solved. In the Lew Wallace family, one of the mysteries was why Lew and Susan’s second grandson, William Noble Wallace, was nicknamed “Tee.” Recently, an unsigned typed manuscript came to light that sheds information not only on this mysterious appellation, but also on the character of this young man who gave his life for his country in World War I, 100 years ago.

Noble, as he was often called, grew to be a handsome man, but he was of small stature. As a boy he decided to compensate for his lack of height by building up his body and his attitude. He excelled in sports that were individually challenging like boxing, wrestling, swimming and gymnastics. He was focused and proud, like Lew Wallace, and had an extreme independence of spirit—also like his grandfather. Noble was a very good fighter and sometimes had to be extricated from difficult situations by his older brother’s charm and diplomatic words.

As a boy, Noble did not make friends easily because of his determined nature. He deeply envied his older brother, Lew Jr., because of his remarkable charm and magnetism.

As Noble grew to be a young man the underlying sweetness of his nature, his intellect, and his athletic prowess brought instant affection, great respect, and deep friendships. In his prep school and at Yale, he chose friends carefully for their fundamental strength of character rather than for their charm or social graces. If Noble deemed you a friend,

there was an unbreakable bond. His time at Yale, his time in the French Ambulance corps, and his service as a Marine demonstrated a commitment, independence, focus, and determination that reflected attributes of his grandfather Lew.

And now the answer to the mystery! With his proud nature and sensitivity to his stature, it is a bit surprising that he accepted and embraced his nickname of “Tee.” When Lew Jr. was first presented with his new baby brother, he exclaimed: “What a Tee-tiny baby.” The epithet so given, stuck. In babyhood Noble was called “Tee-tiny,” which was later shortened to “Tee,” and it was by that name that he was generally known.



William Noble “Tee” Wallace’s military career was exceptional. He was gravely injured several times, but returned to active duty after each recovery. In January 1918, he obtained a short leave to be present at his brother’s wedding in Indianapolis. During his visit, he met an old—but not terribly well-liked—acquaintance from his

childhood. This fellow had great respect and affection for Tee and when the time came for them to part, he could not bring himself to say good-bye. According to others at the party, he announced, “Au revoir, Tee, good luck!” Those present said that Tee, with a wistful smile, shook his head, put his hand on the man’s shoulder, and said, “It’s good-bye, and the best of luck to you.”



Tee was described by men who knew him in France as a “welcome figure in any group, courteous to all, subservient to none, accepting no favours he did not repay, owing no man, and owed by

none, except for friendship. . . He was a friend to his friends, and above all a man right up to the last. There are those of us in the regiment who were, and are closer friends simply because we were friends of Tee. His friendship was something we had in common, and cherished together.”

His death at the age of 23 while completing a mission was a great loss and it would be hard to find a man who better exemplified the Marine motto of *Semper Fidelis* (always faithful). While Tee may have lacked the physical stature of his grandfather, he was clearly a man who stood head and shoulders above many, was a credit to the Wallace name, and deserves to be remembered for the life he lived.

New Items in the Gift Shop

We are always looking for new and interesting items for our gift shop. We recently added a new travel mug with the Study logo on it as well as three new postcards, including one of "The Conspirators," a painting by Lew Wallace.

There is also a new laminated bookmark that features the stained glass windows in the Inglenook and Wallace's grandfather clock, made by Tiffany & Co.

We are also very excited to announce that a souvenir booklet that we have been working on for awhile now is in production and should be available for purchase in our gift shop soon.

If you are interested in anything from the gift shop but can't make it to the museum, give us a call or send us an email and we can ship it to you!



General Lew Wallace deserves his place in history. Help us preserve that place.

Membership to the **Lew Wallace Study Preservation Society** begins with your annual contribution of \$25 or more. Membership offers discounts and complimentary admission and event tickets.

Lieutenant Level—\$25 (Individual)

- Complimentary admission for 1
- Subscription to newsletter

Major General Level—\$50 (Family)

- Complimentary admission for family
- Subscription to newsletter

Governor Level—\$100 (Sustainer)

- Major General-level benefits, plus
- 10% discount in museum shop



Ambassador Level—\$250 (Benefactor)

- Governor-level benefits, plus
- 2 tickets to the annual Taste of Montgomery County

Ben-Hur Level—\$500+ (Patron)

- Ambassador Level benefits, plus
- 1 ticket to the annual Holiday Tea

Name _____

Address _____

City _____ State _____ Zip _____

Phone number _____ e-mail _____

Please clip & mail your membership information to LWSPS, PO Box 662, Crawfordsville, IN 47933

Enclosed is my check payable to the Lew Wallace Study Preservation Society

Charge my gift to (circle one): MasterCard Visa Discover

Card Number _____ Exp. _____ Security Code _____ (3 digits on back)

Signature _____

I wish to remain anonymous

I'm declining benefits, making my contribution deductible to the full extent of IRS regulations.

Civil War Lectures Go Online

Stephanie Cain

Visitor Services

We have had wonderful attendance at each of our Civil War Lectures, including some standing-room-only crowds, but we know not everyone has had a chance to join us in person. If you're a Twitter user, you can follow our lecture tweets at @wallacestudy.

If you want to catch up on the topics we've discussed this year and read tidbits from what our speakers had to say, you can check out our online collection of #CivilWarLecture Tweets at <https://tagboard.com/CivilWarLecture>. Tagboard is a service that automatically pulls together everything we post on Twitter with the keyword #CivilWarLecture. It aggregates things we post on Twitter and Facebook, two of the social networks we use at the Study.

If you visit the link, be sure to let us know what you think! And if you want to follow us on various social media sites, you can find us here:

Facebook: [facebook.com/wallacestudy](https://www.facebook.com/wallacestudy)
 Instagram: [instagram.com/wallacestudy](https://www.instagram.com/wallacestudy)
 Pinterest: [pinterest.com/wallacestudy/](https://www.pinterest.com/wallacestudy/)
 Twitter: twitter.com/wallacestudy

If you aren't signed up for our monthly emails, please send an email to Stephanie Cain at scain@ben-hur.com and ask to be added!

#WallaceStudySelfie

You know you'll take one anyway, so why not show it off?



Here's how it works:

1. Take a #WallaceStudySelfie...
2. Tag @wallacestudy when you Tweet it...
3. We'll share your selfie on our Twitter and Facebook accounts...
4. Visit tagboard.com/WallaceStudySelfie to see all our collection of selfies-- including museum staff, volunteers, and other visitors!



 @wallacestudy

 wallacestudy

Museum Participates in AASLH StEPS Program

The Study board, together with director Larry Paarlberg, created a new three-year strategic plan for the museum late last year. One of the goals listed in the plan is to pursue museum accreditation through the American Alliance of Museums. Achieving accred-

StEPS

itation means that the museum meets or exceeds accepted national standards and fulfills its commitment to the public trust.

A great precursor to accreditation is the American Association of State and Local

History's (AASLH) Standards and Excellence Program (StEPS). Over the next several months, the museum staff and board will be working their way through the StEPS workbook to meet the national standards in our everyday work. This is an exciting process that will allow us to better understand our strengths and find opportunities for improvement.

Second ArchiCamp a Success

Amanda McGuire

Associate Director

The General Lew Wallace Study & Museum would like to thank everyone who made ArchiCamp a success. The eleven elementary and middle-school aged children who attended had a wonderful time making new friends and experiencing learning in a new way.

On Tuesday, students went on a walking tour of Elston Grove, learned about different styles of houses, made stained glass “windows” and toured the Study basement. They also built some of the houses they saw in Elston Grove out of recyclable materials.



On Wednesday, students designed and made plaster bricks, toured the Masonic Temple, went on a walking

tour of downtown businesses, and discussed the architectural mural at the Carnegie Museum. The students loved the architectural scavenger hunt they went on at the Masonic Temple. Thank you to John Phillips and Judi Kleine for leading that!

In the afternoon, Anne Moore came to discuss careers in historic preservation and the archaeology work that she is involved with on the Study grounds.

We would like to thank our sponsors: Roberta Berry, Clements Plumbing, Delta Theta Tau - Epsilon Omega Chapter, Crawfordsville Kiwanis, Montgomery County Retired Teachers Association, Fraternal Order of Eagles Aerie 1005, Psi Iota Xi - Gamma Xi Chapter, American Legion Byron Cox Post 72, Crawfordsville Tri Kappa, and INFBPW/Crawfordsville. Grants were awarded from Union Township and Walmart for the camp. Also, a big thank you to Nancy Norton and Jan Cain for their help throughout the camp.

Collections Corner

Amanda McGuire

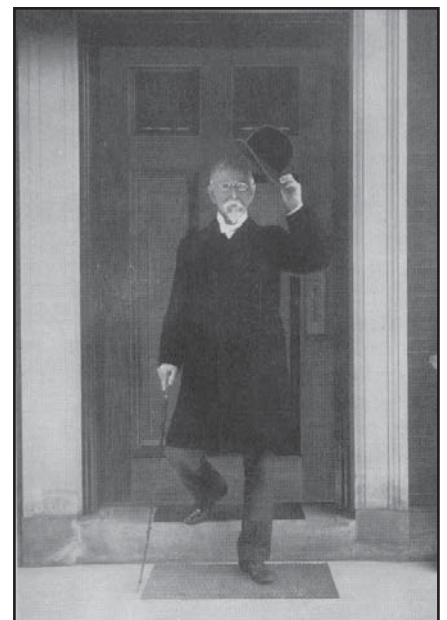
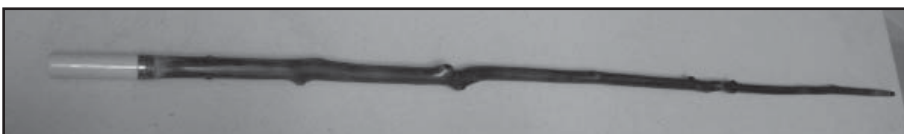
Associate Director

We have eight of Lew Wallace’s canes/walking sticks in the collection. One of these walking sticks has a very interesting backstory.

In the late 1800s, Wallace revisited the battlefield at Shiloh. While there, he located the place where his tent stood and found a sapling growing. He had the sapling cut down and sent it to Tiffany & Co.

They made it into a walking stick and added an ivory handle and silver band. One side of the band is engraved with “Gen. Lew Wallace” and the other side has Tiffany & Co.’s maker’s mark.

This is not the only thing Tiffany’s made for Lew. They also custom-made the grandfather clock that still stands in his Study today.



Civil War Lecture Series to Resume in the Fall

Our Civil War Lecture Series has been very popular this year. We have had six speakers so far this year and have had at least 25 people at each lecture!

We are taking a short break from the lectures so we can focus on the Taste of Montgomery County in August, but we will be back with two additional lectures in the fall.

On October 23, S. Chandler Lighty, Historical Digital Newspapers Program Manager & Digital Initiatives Consultant at the Indiana State Library, will present overlooked aspects of Wallace's ten-

ure as commander of the Eighth Army Corps in Baltimore, such as court-martial cases, in his presentation, "Crowded with Perplexities: Lew Wallace and Civil Liberties in Baltimore."

On November 6, we are partnering with Wabash College to bring Professor Jane Schultz to discuss Civil War relief work. She will spend the day speaking with Wabash students and present a public lecture in the evening. Professor Schultz is an English professor at IUPUI who has several publications about Civil War nursing practices.

This lecture series is sponsored in part through a matching grant from Indiana Humanities in cooperation with the National Endowment for the Humanities.

To learn more about these and other programs, please contact the museum or visit our website www.ben-hur.com.



Taste!, continued

Juniper Spoon. For an updated menu, please visit the website.

Advance tickets are now on sale in select locations. Visitors can purchase Taste tickets at the Carriage House Interpretive Center at the General Lew Wallace Study & Museum; the Montgomery County Visitors and Convention Bureau at the corner of Pike and Green streets; and Milligan's Flowers & Gifts at 115 E. Main Street. Advance tickets are \$4 for adults and \$2 for students, and advance ticket



This year's Taste headliner, Jennie DeVoe

holders can bypass the line at the entry gate for quicker admission to the fun.

A special thanks to the Title Sponsors of this year's Taste, who donated \$1000 or more: The Montgomery County Visitors and Convention Bureau, the Montgomery County Tourism Commission, Franciscan St. Elizabeth Health-Crawfordsville, the *Journal Review*, and *The Paper of Montgomery County*.

The staff and board would like to thank the Taste Committee in advance for their hard work and dedication to this event: Jessica Bokhart, Stephanie Cain, Kara Edie, Erin Gobel, Joey Gerold, Deb King, Amanda McGuire, Larry Paarlberg, and Dale Petrie. A special thanks to this year's Committee Chair: Brian Keim.

The Taste is the biggest annual fundraiser for the General Lew Wallace Study & Museum. All proceeds from gate sales directly benefit the Museum's collection and programming. Bring your friends and family to the county's biggest picnic to help support the organization that keeps General Lew Wallace's legacy alive for future generations. For more information about this year's Taste, visit our website at tasteofmontgomerycounty.com.

Featured Garden: Lew Wallace Jr. Garden

Deb King
Grounds Manager

Along the brick walkway that leads to the Study, there are two gardens named after General Wallace's grandsons. The Lew Wallace Jr. garden has a variety of plants that stimulate the senses. Visitors can enjoy the beauty, smell different herbs, and feel a variety of textures in this garden.

Sage (*Salvia officinalis*) and lavender (*Lavandula angustifolia* 'Hidcote') grow into small bushes of grey-green foliage. When crushed, the coarse leaves of the plant give off a wonderful aroma.

Lemon balm (*Melissa officinalis*) is another very fragrant herb. Visitors are invited to harvest a few leaves and "wash their hands" for a fresh lemony scent.

Bordering the garden are creeping thyme (*Thymus*) and oregano (*Origanum vulgare*). Both plants have small dark green leaves. It's great to see the kids' amazement when told that these are what make pizza and Italian dishes so tasty!



Fennel (*Foeniculum vulgare*) is a new addition to the garden this year. The airy fern-like foliage and white stems contrast wonderful-

ly against the dark green peony bushes. Rosemary (*Rosmarinus officinalis*) is a stiff upright herb with needle-like foliage. When compared to the soft leaves of lavender, rosemary is stiffer and coarser.

Along the walkway border grows Lamb's ear (*Stacy's byzantine*) and silver mound (*Artemisia schmidtiana*). As it provides a silver coloring and a soft texture to the garden, visitors are encouraged to feel the foliage. Hostas are grown to show the visitor that beauty and color don't always come from a blooming plant.

Begonias (*Begonia semperflorens*) add a bright red color and a waxy dark green leaf to the garden. Growing in a small clump, the begonias add a new level of texture to the garden. Look, listen (to the plants growing), touch and smell--and maybe taste--your way through your next visit to the Lew Wallace Jr. garden.

Meet our Intern: Nathaniel Busenbark

This year's summer intern, Nathaniel Busenbark, is a senior attending Crawfordsville High School. He enjoys history and playing sports such as soccer and baseball at his high school. With a college undecided, he plans to major in business and minor in Spanish. "With Lew being bilingual in Spanish, this also opened a new aspect of history to me," Nathaniel explained. Through his internship here at the Study he has worked on research projects, such as looking into the history of Camp Wallace near Evansville and finding ma-



terials to look at for next year's exhibit. Nathaniel has also been busy helping Deb on the grounds with a variety of projects including prepping new picnic tables for the Taste and freshening up our old tables with a new coat of paint. He has helped with a number of tours and started reorganizing the extensive research files.

We were so pleased to have Nathaniel with us this summer and wish him luck during his senior year!

General Lew Wallace Study & Museum Contributions

Every member and donor matters a great deal to us and we appreciate your support. We have made every attempt to ensure the accuracy of this list. If we have made an error in your listing, please contact us immediately.

Memberships

March 1, 2014 - June 30, 2014

Ben-Hur

Chuck & Nancy Beemer
Tom & Marie Stocks

Ambassador

James & Lorena Elmore
Franklin & Margaret Moore
Bobbye Thompson

Governor

Larry & Nancy Bennett
Natalie Halfman
Marc & Helen Hudson
Chris Johnson—Johnson
Williamson Insurance
Tery Lawrence
Stephen & Susan Little
Bernard & Cristina Manker
Steve McLaughlin—Tri County
Bank & Trust
Marian Morrison
Jamey & Diane Norton
Ted & Betty Ratcliff
Dennis & Suzanne Slovacek
Jerry & Molly Spillane
Mary Weeks/Pete Palfrey
Mary G. Wernle

Major General

Charles & Isobel Arvin
Jim & Patience Barnes
Larry & Sandra Baumgardner
Terrell Carlisle
Rusty & Kathy Carter
David Chidester
Laura Conners/Doug Calisch
John & Betty Culley, Jr.
Earl & Ruby Elliott
Russell & Shirley Fruits
Scott & Tamara Hemmerlein
Tobey & Peggy Herzog
Robert & Kathy Keck
Kimball & Mary Lloyd-Jones
Katie McMillin

Greg & Melissa Redding
Jerry & Cindy Smith
Phillip & Patricia Smith
John & Kathy Steele
Barry & Barbara Virgin
Rodger & Machiel Walther
Joh & Milyn Wells
Jean Williams
Jack & Beverly Wyatt
John & Margaret Zimmerman

Lieutenant

Nancy Bowes
Linda Brady
Douglas Clanin
Denny & Carol Cook
Vernon & Barbara Easterling
Johanna Herring
Ethan Hollander/Christie Byun
Deb King
S. Chandler & Elisabeth Lighty
Keith & Marian Lindow
Robert & Susan Miller
Doug & Nancy Mills
Nancy Norton
Ed Pease
Judith Lynn Smith

ArchiCamp Sponsors

American Legion Byron Cox Post 72
Roberta Berry
Clements Plumbing
Crawfordsville Kiwanis
Crawfordsville Tri Kappa
Delta Theta Tau Sorority Epsilon
Omega Chapter
Fraternal Order of Eagles #1005
INFBPW/Crawfordsville
Montgomery County Retired
Teachers
Psi Iota Xi – Gamma Xi Chapter
Union Township
Walmart Foundation

TASTE!

Title Sponsors

Franciscan St. Elizabeth Health –
Crawfordsville
Howard Miller
Journal Review
Montgomery County Tourism
Commission
Montgomery County Visitors &
Conventions Bureau
The Paper of Montgomery County

Contributing Sponsors

Banjo Corporation
City Securities Insurance
Crawford Industries, LLC
Crawfordsville Main Street
Hoosier Heartland State Bank
International Paper
Lafayette Bank & Trust
Lafayette Printing
Unverferth Manufacturing -
Dennis J. Hohlbein
Wabash College
Walden Transport & Recycle
WCDQ/WIMC/WCVL

Supporting Sponsors

Arni's of Crawfordsville
Elizabeth A. Justice Att. at Law
Greg Miller Law
Henthorn, Harris & Weliever
Indiana American Water Co., Inc.
J.M. Thompson Insurance
Journal Review
The Juniper Spoon
MainSource Bank
Morse Family Dentistry
Nucor Steel
Pace Dairy Foods
R.R. Donnelley
RATIO Architects
Sterling Energy Group
Tri-County Bank and Trust

Other

All Smiles
Dr. Janet Rucker

Study Scrapbook



Clockwise from top right: Volunteers help prepare the grounds for spring during Park Day; John Phillips leads the ArchiCamp kids on a tour of the Masonic Temple; Amanda receives a check from the Cincinnati Civil War Round Table for the Making A Historic Difference Campaign; Gail Stephens poses with members of the Indy Eleven soccer team; members of the Animal Welfare League on the grounds for the Stroll for Strays; Stephanie and Amanda meet Zeke, the Indy Eleven mascot, wearing a Zouave uniform, as part of the Civil War Lecture Series and Lew Wallace birthday celebration.



**GENERAL LEW WALLACE STUDY &
MUSEUM**

200 Wallace Avenue
PO Box 662
Crawfordsville, Indiana 47933
Phone: 765-362-5769
Email: study@ben-hur.com
www.ben-hur.com

PRSRT STD Nonprofit US Postage Paid Crawfordsville IN Permit No. 8
--

RETURN SERVICE REQUESTED

2014 Summer & Fall Events Calendar

August 23 - The eighth annual **TASTE of Montgomery County** will take place on museum grounds and feature scrumptious food from local restaurants and live music. Mark your calendars to join us! Admission: \$5/adults, \$3/students, 6 and under are free.

September 6 - 7 - Join archaeologists from the University of Indianapolis as they continue excavation of Lew's reflecting pool during **History Beneath Us**. See historic archaeology in action and join in the fun by digging and sifting for artifacts. Free.

September 27 - Join the museum as we celebrate **Smithsonian Museum Day Live!** Free admission with Smithsonian pass.

October 1 - The slave chains that have been on exhibit will be leaving to make an appearance at Monocacy National Battlefield for Emancipation Day in November so be sure to stop by the Carriage House Interpretive Center to see the chains before they are gone.

October 23 - The **Civil War Lecture Series** resumes when Chandler Lighty presents "Crowded with Perplexities: Lew Wallace and Civil Liberties in Baltimore" at 7 p.m. Free, RSVP required. Held in the Carriage House Interpretive Center.

November 6 - Our final **Civil War Lecture** of the year will feature Professor Jane Schultz discussing Civil War relief work and the role women played in the war effort. Held at Wabash College. Time TBA.

December 6 - The eighth-annual **Holiday High Tea & Fashion Show** returns to historic Elston Homestead. \$25, tickets required.

December 13 - Last day of the season. This will be your last chance to see this year's Museum exhibit, **Vindication: Lew Wallace in 1864** in the Carriage House Interpretive Center.