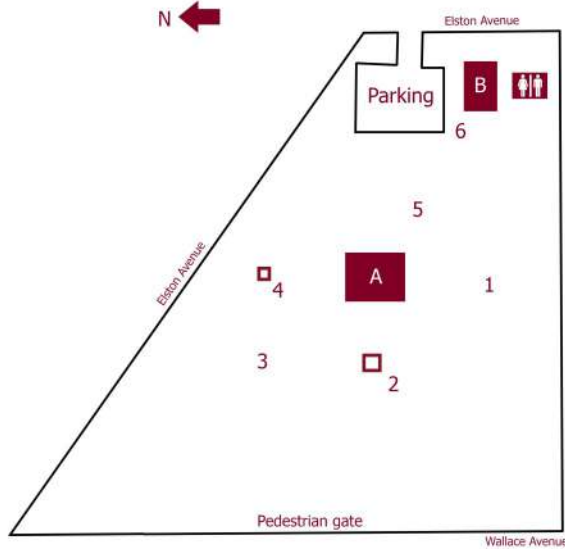


# GENERAL LEW WALLACE STUDY & MUSEUM

Thank you for visiting the home of *Ben-Hur*! We hope you enjoy walking around our 3.5 acres of rolling terrain. There are six interpretive signs on the grounds to give you more information and make your visit more enjoyable.



## Walking Tour Points of Interest

1. Study building sign
  2. *Ben-Hur* Beech site and Wallace statue sign
  3. Reflecting pool and History Beneath Us sign
  4. David Wallace Memorial sign
  5. The moat sign
  6. Carriage House and Wallace family home sign
- A. Study Building  
B. Carriage House Interpretive Center

[www.ben-hur.com](http://www.ben-hur.com)  
200 Wallace Avenue  
Crawfordsville, IN 47933  
765-362-5769

# STUDY RESTORATION

*"The border around the skylight is handpainted, designed by the owner. It consists of implements of warfare in groups chained together...the shield, helmet, sword, bugle, breastplate, etc..."*  
– Ella Kostanzer, January 1, 1900

## ELABORATE PAINT FINISHES

In 2011 a detailed paint analysis of the interior hinted at the possibility of an elaborate paint finish. Conservators removed nine layers of over-paint to see what survived from the 1890s. They went up inside the dome to the perimeter of the skylight and there it was!

Following Ella's description, conservators located a fife and drum in the southeast corner of the dome and a section of the chain that will someday again link the elements of the military motif. Beyond the fresco design, the original painted finishes include a color scheme that fades from dark to light blue in the main room and a dark red and gilded design in the entry vestibule. The elaborate plaster floral band that surrounds the main room was gilded so each light sparkled.

## RESTORATION PROJECT

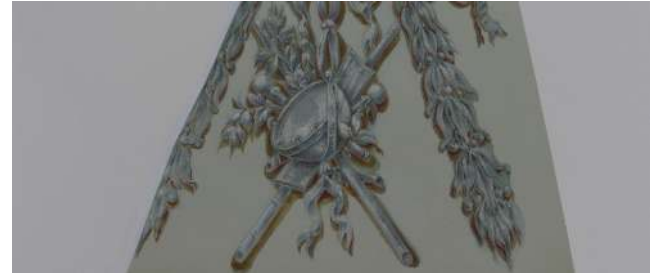
The restoration of the interior of Lew Wallace's Study is underway. The first step in the process has been the demolition of the old electrical system and the installation of new wiring. This work is complicated; it appears the original wiring was installed prior to the finish plastering. We have learned much about the manner in which the plastering and original wiring was done that we will include in our institutional archives and share with interested visitors.

Once the modern wiring is fully installed, we will move on to the next phase of the project as we begin the dramatic restoration of the interior paint finishes as created by Wallace 120 years ago.

Plans call for the completion of the interior restoration by Summer 2015.



*The uncovered portion in center, with later paint finishes to right and left.*



*A close-up of the tromp l'oeil fresco in the southeast corner of the Study. The fife and drum reflect the military motif.*



*A close-up of the 23k gold leaf on the plaster frieze. The gold leaf had to be reproduced rather than restored.*



*A reproduction of the paint finish uncovered in the Study vestibule.*