



# Join us for the 15th Annual TASTE! of Montgomery County



## Inside This Issue

Notes from the Director	2
Summer Intern	5
Fall Programming	6
From the Gardens	7
ArchiCamp	9
Donor Recognition	10
Study Scrapbook	11
Events Calendar	12

### Stephanie Cain Visitor Services

Museum staff, the TASTE Committee, and other dedicated volunteers are hard at work preparing for the fifteenth annual TASTE of Montgomery County. This year the event returns on Saturday, August 27 from 12:00 - 10:00 p.m.

This year the TASTE will feature three musical acts.

The Elizabeth Lee Duo opens the day's entertainment at 1 p.m. A father-daughter duo, Elizabeth Lee and Bobby Pugh are singer-songwriters with an emphasis on clear vocals and harmonies. They perform chill covers from generations ranging from the 40s to now. (Although Elizabeth has to remind her dad daily

of the more modern artists and songs.) They also include a few original songs

– 6:30 p.m. will be Eliana Weston. Though Eliana is from Indiana, Nashville,



from their album. You can check out their style ahead of time by visiting their social media or website, [www.ElizabethLeeBand.com](http://www.ElizabethLeeBand.com). They are very excited to be playing in Crawfordsville, as Elizabeth's dad, Bobby Pugh, is from Crawfordsville.

Playing from 4:30

Tennessee, is the true destination of her soul. Known for her big, blonde hair and glowing personality, she has built a dedicated fan base by singing to your soul and not being afraid to let her heart lead her. Weston is well known for her country singing with a splash of blues and rock sprinkled in.

*cont. on page 3*

*The General Lew Wallace  
Study & Museum  
is deeply committed  
to the protection  
and preservation  
of Lew Wallace's  
legacy now and for  
generations to come.*

**Mission**

## Board of Trustees

*President*  
**John Culley**

*Vice President*  
**Jessica Bokhart**

*Treasurer*  
**Byron Thada**

*Ex Officio*  
**Fawn Johnson**

**Joey Gerold**

**J. Lamont Harris**

**Nicole Hazlett**

**Judith Kleine**

**S. Chandler Lighty**

**Susan Rosen**

**Cindy Smith**

**Gerry Turner**

**Bronwen Wickkiser**

## Museum Staff

*Director*  
**Larry Paarlberg**  
[lpaarlberg@ben-hur.com](mailto:lpaarlberg@ben-hur.com)

*Associate Director*  
**Amanda McGuire**  
[amcguire@ben-hur.com](mailto:amcguire@ben-hur.com)

*Visitor Services*  
**Stephanie Cain**  
[scain@ben-hur.com](mailto:scain@ben-hur.com)

*Grounds Manager*  
**Deb King**  
[dking@ben-hur.com](mailto:dking@ben-hur.com)

**765-362-5769**

## Notes From The Director



The Carriage House at the Lew Wallace Study & Museum was built by Lew and Susan Wallace ca. 1870, at the same time as their home. The home was sold out of the family in 1919, but the Carriage House remained part of the Study grounds owned by their son, Henry, and then their grandson, Lew Jr. When the property was purchased and gifted to the City of Crawfordsville in 1941, the Carriage House soon had new life.

For several decades, it served the community as a meeting place for several groups of girls involved in scouting and outdoor activities. Over the years, it was remodeled with the additions of windows and a fireplace. After decades of use, it was retired from community service sometime in the 1980s as its care and upkeep became too much for the city to manage. For another few years it housed a Parks and Recreation employee, but by the 1990s even his occupancy was deemed unsafe as the

building deteriorated. It sat vacant for many years until the decision finally had to be made—demolish the building or rehabilitate it to make it safe and useful again.

Happily, the City administration, the Lew Wallace Board of Trustees, the Museum staff, and others made the decision to save the Carriage House. It took a couple of years to raise the funds needed for the rehabilitation and to develop the architectural plans, but work on the building began in 2005 and was completed in 2006. The newly renovated Carriage House offered the museum new visitor orientation space, a gift shop, staff offices, and climate controlled storage for artifacts. Since its return to service, this building has been invaluable to the operations of the museum—how did previous generations of museum employees work without the benefit of the Carriage House?

In the 16 years since the building returned to active service, an estimated 100,000 people from almost every state in the nation and dozens of foreign counties have crossed the threshold. Over the last couple of years, museum staff has become increasingly aware of issues in the building that bear investigation and analysis so that plans for upgrades and refurbishment can be made. Issues like improved insulation,

restoration of at least two of the windows, sloping floors, structural concerns, exterior painting, roofing, and upgrades to technology need to be addressed over the next few years as we seek to keep this hard-working building operating for the benefit of the museum.

To fund the architectural and engineering analysis, the

museum received two grants: one from the Montgomery County Community Foundation and one from Indiana Landmarks. The project will commence later this year and will take just a few weeks of on-site investigation with an analysis of their findings to follow. With this document, we will know which issues of concern require immediate attention and which will need

to be addressed down the road. It will, in effect, give us a blueprint for the care of this building for years to come. Our thanks to the fund donors at the Community Foundation, the Foundation grant committee, and to Indiana Landmarks for making this assessment possible. As we learn more about the building, we will be sure to keep all of our stakeholders informed.

## TASTE!, continued

Eliana has always loved pursuing the up and coming music while continuing to sprinkle her shows with music from any decade. Her playlist is a true time traveler's dream with a thorough mix of Elvis, Dolly, and Carrie Underwood.

Eliana is determined to make her music be more than just a catchy tune, but something that impacts and gives people a moment to just breathe and enjoy a guitar riff.

Weston performs on her guitar (Elvira) and spends most of her time songwriting in Nashville (expect original music soon). She loves playing shows with her band while on a quest to find the best BBQ.

Finishing up the evening will be The Warrior Kings, playing from 8 – 10 p.m. A hard rock band with a dark blues soul, The Warrior

Kings features Benjamin Williams (drums and vocals), Casey Harshbarger (lead guitar), and Austin Shearer (bass).



appearances on Indy's WISH-TV 8 and on "Inside Tracks", a Comcast On Demand TV series.

In March of 2015, The Warrior Kings were crowned champions of The Hard Rock Rising Battle of the Bands in the Indianapolis region.

*Left: Eliana Weston*

*Below: The WarriorKings*

Hailing from Indianapolis, the band has released two studio albums in 2012 and in 2015. Their music has been featured on the Blues House Party on WFYI 90.1 and 92.3 WTTS. The Warrior Kings have also made TV



*cont. on page 4*

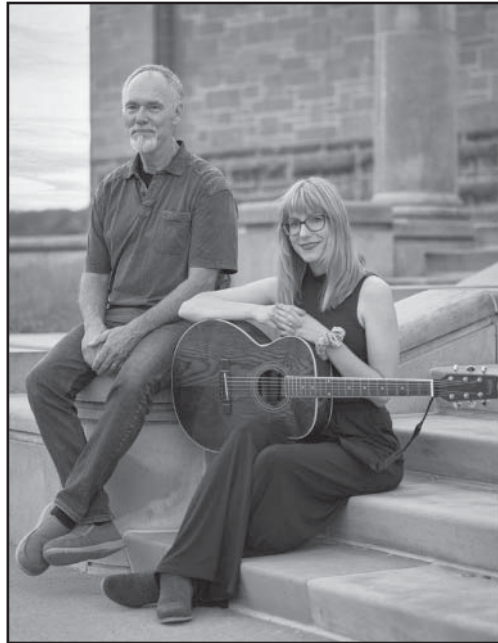
## TASTE!, continued

At the TASTE, local restaurants, caterers, and food vendors will serve their most delicious delicacies on Museum grounds. Among the vendors participating will be Aki Les Voy Takeria, China Inn, Coal Creek Winery, Four Seasons Local Market, Greek's Pizzeria, Hoosier Ice Queen, Sunoco Crawfordsville, and Street Penguin Gelato. A menu will be available to be downloaded from the website with a full list of vendors before the TASTE.

Advance tickets are now on sale in select locations. Visitors can purchase TASTE tickets at the Carriage House Interpretive Center at the General Lew Wallace Study & Museum; the Montgomery County Visitors and Convention Bureau at 101 W. Main inside Fusion54; Milligan's Flowers & Gifts at 115 E. Main Street; and Crawfordsville Parks & Recreation at 922 E. South Blvd. Advance tickets are \$5 for adults and \$2 for students, and advance ticket holders can bypass the line at the entry gate for quicker admission to the fun. Tickets at the gate will be \$7 for adults and \$3 for students.

Are you interested in attending the TASTE for free? The museum is recruiting volunteers to assist before, during, and after the event. Volunteers

get a TASTE t-shirt or food tickets and free admission to the event. To volunteer, please visit <http://www.tastemoco.com>.



*The Elizabeth Lee Duo, the opening act at this year's TASTE*

visit [tastemontgomerycounty.com/volunteers/](http://www.tastemontgomerycounty.com/volunteers/) and click the "Sign Up Genius" button.

We also invite you to help us spread the word by joining our Street Team. Visit the Street Team page on our website for images that can be shared on Twitter, Facebook, Pinterest, and other social networks, as well as a printable flyer you can send to your friends! Please use the hashtag #TasteMoCo2022 in all social media posts.

A special thanks to the Title Sponsors of this year's TASTE, who donated \$1000 or more: Acuity Brands,

Hoosier Heartland State Bank, Dr. Howard Miller, Market Street Wealth Management – Jessica Bokhart, Montgomery County Tourism Commission, The Paper of Montgomery County, Tri-County Bank and Trust, and Teachers Credit Union.

The staff and board would like to thank the TASTE Committee in advance for their hard work and dedication to this event: Stephanie Cain, Rusty Carter, Elaine Chase, Joey Gerold, Deb King, Amanda McGuire, Larry Paarlberg, and Dale Petrie. A special thanks to this year's committee chair Jessica Bokhart.

The TASTE is the biggest annual fundraiser for the General Lew Wallace Study & Museum. All proceeds from gate sales directly benefit the Museum's collection and programming. Bring your friends and family to help support the organization that keeps General Lew Wallace's legacy alive for future generations. For more information about this year's TASTE, visit [TasteOfMontgomeryCounty.com](http://TasteOfMontgomeryCounty.com). You can also keep up with announcements and news by following the TASTE on Facebook at [www.facebook.com/TasteOfMontgomeryCounty](http://www.facebook.com/TasteOfMontgomeryCounty).

## Summer Intern Owen Bennett

*Owen Bennett*  
Intern

My name is Owen Bennett, and I am the son of Brandy and Jeremy Bennett. I am a Crawfordsville native who graduated from Crawfordsville High School in 2020 and a rising Junior at Wabash College. At Wabash, I am a History Major and Political Science Minor, and I am very involved in the Wabash Community as I hold the position of President of Phi Alpha Theta History Honors Society, Resident Assistant of Williams Hall, Historian of Wabash College Republicans, Writing Consultant for the Writing Center, and Admissions Ambassador for the Admissions Department. After I graduate from Wabash, I plan to attend graduate school and pursue a master's degree in public history and, hopefully, achieve a doctorate degree in 19th-century American History.

This summer I am interning at the General Lew Wallace Study and Lane Place, where I can experience the career of a historian. At the Gen. Lew Wallace Study, I am studying Lew Wallace's law career, specifically a court case Lew participated in on April 13, 1861.

During the middle of arguing the case *Winship v. Clendenning* (1861), Lew, who at this time was Adjutant General of Indiana, received a telegraph from Indiana Gov. Oliver P. Morton telling him to come to Indianapolis and prepare his men for war, due to Fort Sumter being fired upon. I am investigating all the lawyers involved in the case, as well as those who were referred to in the documents to hopefully provide a better understanding of the men who were involved and the case. I am also working on providing the Lew Wallace Study with more court cases that Lew was involved in to expand the museum's understanding of his law career. Aside from researching Lew's legal career, I lead guided tours for visitors of the Lew Wallace Study. At Lane Place, I am running the museum while our director is on maternity leave. Aside from learning how a museum operates, I am researching Henry S. Lane's law and political career. I am specifically focusing on his early years in Kentucky, including his early schooling, and his beginnings here in Crawfordsville. My goal at the end of the summer is to piece together a clear history of Henry S. Lane that aims to explain the foundation of Henry's ideology.



Aside from my involvement in the museums, I have taken the position of Oral History Interviewer for the Montgomery County Historical Society for the Covid-19 oral history project. Over the summer I will be interviewing 50+ individuals who resided and worked in Montgomery County during the Covid-19 pandemic. I look forward to seeing the interviews made accessible to the public.

When I have free time, I can be found fishing at Lake Holiday or Sugar Creek and taking in nature while walking or hiking. I also am fond of reading, writing, and drawing and participate in these activities quite often. However, my favorite thing of all is spending time with my girlfriend, friends, and family.

### Stay Connected Online:



wallacestudy



@wallacestudy



wallacestudy

## Fall Programming at the Study

The Museum strives to provide programming that relates not only to Lew Wallace, but also to our current exhibit. Our 2022 exhibit “This Just In” highlights new additions to the collections of the General Lew Wallace Study & Museum, and our fall Dr. Howard Miller Lecture Series ties in to that theme. In addition to the lectures, we are also planning Hoosier Author Book Club discussions, our annual Hoosier Author Fair, and our annual Holiday Tea.

**Thursday, September 15, 7:00 p.m. – Dr. Howard Miller Lecture Series – The Mount Vernon Ladies’ Association: 162 Years of Collecting George Washington.** When the women of the Mount Vernon Ladies’ Association took ownership of George Washington’s estate in 1860, they faced a daunting task: the rooms of the Mount Vernon mansion were nearly empty. In the six decades after Washington’s death, his family’s possessions had been dispersed widely through gifts, bequests, and sales. But over the last 162 years, this private non-profit operating Washington’s Virginia estate has tracked down thousands of original artifacts, from furniture to silver, clothing to locks of hair. Today, the organization boasts a rich collection that tells the story of George Washington as general, president, and private citizen. This lecture will explore the

MVLA’s collecting practices and priorities, highlighting significant acquisitions from the 19th century to today. Jessie MacLeod is an associate curator at George Washington’s Mount Vernon.

**Saturday, September 17, 10 a.m. to 4:30 p.m. – Smithsonian Museum Day Live** – Museum Day is an annual celebration of boundless curiosity hosted by Smithsonian magazine. Participating museums and cultural institutions across the country provide free entry to anyone presenting a Museum Day ticket. The General Lew Wallace Study & Museum will offer free half-hour tours all day.

**Thursday, September 29, 7:00 p.m. – Dr. Howard Miller Lecture Series** – Suzanne Hahn, Vice President, Archives and Library at the Indiana Historical Society, will discuss **The Collections of the Indiana Historical Society**. Since 1830, The Indiana Historical Society has been collecting and preserving Indiana’s unique stories; bringing Hoosiers together in remembering and sharing the past—including Lew and Susan Wallace. Suzanne will discuss not only how the Society has grown and refined its collection, but also new collecting initiatives that will inspire future Hoosiers.

**Friday, September 30 – Field Trip** – The Indiana Historical Society in Indianapolis

will offer a behind the scenes look at what they do. Space will be limited and **reservations are required**. For more information, call the General Lew Wallace Study & Museum.

**Thursday, October 6, 7:00 p.m. – Dr. Howard Miller Lecture Series** – Kathleen Langone will present **Finding Amalia Kussner**. Kussner was a miniature portrait artist and a “darling” of the Gilded Age who became one of the most sought-after artists of that time. Although Amalia was a distant family member, Kathleen knew little about her. The program highlights how just one artifact can trigger amazing research about someone forgotten to history. Amalia’s career would include painting many of the premier families of New York (Astors, Vanderbilts, Goulds, etc.). With her rising popularity, she then had access to do portraits of European and Russian royalty (King Edward the 7th, the Czar and Czarina of Russia, and numerous others). With her adventurous spirit, Kussner traveled during the Boer War in South Africa to paint Cecil Rhodes. In addition to her artistic talent, she was adept at marketing herself and commanding impressive commissions. Amalia was clearly a woman ahead of her time. This presentation will cover the full story of her life, starting with her early years in Terre Haute, her incredible rise to fame in New York in the 1890s, and her final

## From the Gardens

*Deb King*

*Grounds Manager*

From the lush and vibrant colors of spring to the brown lawn and stunted flowers of summer, the gardens at the Lew Wallace Study & Museum continue to produce beauty. The grounds of the Study are suffering through one of the driest summers in recent memory. The U.S. drought monitor shows west central Indiana under moderate drought conditions. For the month of June, the Study has recorded less than 2 inches of rain!

The lawn, sown with grass seed this spring, will need replanting in the fall. The germination percentage of many flower seeds were low. The gardens receive supplemental watering as needed. Gardens planted with a majority of perennials can survive short-lived drought.

The gardens at the Museum continue to attract butterflies, goldfinch, and bees. The blooming milkweed saw a plethora of bees, and goldfinches in droves visit the coneflowers. The goldfinches must be scouting out the gardens, as it is a little early for coneflower seed production.

The Study's plant inventory increased this year with the addition of four native wildflowers. The inventory has documented over 100 varieties of plants! The introduction of native wildflowers to the Study's

grounds is an ongoing program for the Museum.



*Above: Jack-in-the-pulpit*

*Right: Dutchman's breeches*

Jack-in-the-pulpit (*Arisaema triphyllum*) and Mayapple (*Podophyllum peltatum*) grow in shady, moist, rich humus areas. The Water Babble garden fits this criterion. The garden is a holding bed of fallen leaves and decomposing twigs and debris, which enriches the soil.

Jack-in-the-pulpit has a large, cylindrical hooded flower that is green with brown stripes. The Mayapple has large umbrella-like leaves that unfurl when the stem reaches its mature height. Many hunters look for the mayapple to locate a patch of the delicious morel mushroom. Both plants thrive in moist woodlands with a thick bed of leaves.

Dutchman's breeches (*Dicentra cucullaria*) is a woodland wildflower. Native throughout eastern United States, Dutchman's breeches have fern-like foliage and produce a cluster of white flowers. The

flowers look like upside-down pantaloons and are fragrant. Dutchman's breeches multiply by underground tubers, often making a white carpet in wooded areas.



Celandine poppy (*Stylophorum diphyllum*) is another wildflower planted near the Water Babble garden. The celandine poppy has blue-green foliage with a silver underside and clusters of bright yellow flowers in the spring. The flowers, when pollinated, develop an ovoid, hairy fruit pendant that releases hundreds of brown/black seeds. A mass planting of celandine poppy brightens a dark woodland glade.

The native wildflowers and trees on the Museum's grounds continue Lew Wallace's legacy. General Wallace loved the outdoors, bringing plants from his summer home (Water Babble) to his house in the city. The shady groves of the Museum provide great opportunities to plant Indiana natives.

## Programming, continued

years in Europe after 1900. You will see images of a wide variety of her work, both from museums and a private collection.

### **Thursday, October 20, 7:00 p.m. – Hoosier Authors Book Club**

– The book club will discuss *Always a River: The Ohio River and the American Experience*, edited by Robert Reid. The ever-changing Ohio River flows through time as well as space, connecting us with the past as it links Pittsburgh with Cincinnati, Cairo, and New Orleans. *Always a River* views the Ohio through the perspective of history, geography, political science, economics, and literature. Essays by Scott Russell Sanders, John A. Jakle, Hubert G. H. Wilhelm, Michael Allen, Darrel E. Bigham, Leland R. Johnson, and Boyd Keenan tell about the settlement period of the river, its economic importance, the different phases of engineering over a long period of time, and the river as an ecological system.

**Thursday, October 27, 7:00 p.m. – Dr. Howard Miller Lecture Series** – Peter Hatch will present **Thomas Jefferson’s Revolutionary Garden at Monticello**. Hatch, Director of Gardens & Grounds Emeritus for the Thomas Jefferson Foundation, was responsible for maintenance, interpretation, and restoration of the 2,400-acre landscape at Monticello from 1977 to 2012. Thomas Jefferson wrote that

“the greatest service which can be rendered any country is to add a useful plant to its culture,” and Monticello’s 1,000-foot-long, terraced vegetable garden became an experimental laboratory, an Ellis Island of new and unusual vegetable novelties from around the globe. While growing over 330



Monticello

vegetable and 170 fruit varieties, Jefferson was also a pioneer in supporting farmer’s markets and promoting vegetable cookery. This revolutionary garden resulted in a revolutionary cuisine in the kitchen at Monticello. Restored in 1984, the garden and the Jefferson legacy continue to inspire the farm to table movement today. As a tie to our theme for 2022, Peter will incorporate collecting issues at Monticello with stories of plants dying, seed collecting compromised by naughty harvesters, varieties not being true to name, and more.

**Thursday, November 17, 7:00 p.m. – Hoosier Authors Book Club** – The book club will discuss the novel *All These Beautiful Strangers* by Elizabeth

Klehfoth. Charlie Calloway has a life most people would kill for. A tight knit family. A loyal set of friends. A fast-track to whichever college she chooses. But Charlie isn’t interested in what most people want. She’s a Calloway. She’s special. And she’s been taught to want more. So when she’s invited to join an exclusive secret society, her determination to get in is matched only by her conviction that she belongs there. But behind their mysterious facade is a history of lies which unravels everything Charlie thought she knew...including the story behind her mother’s disappearance ten years ago.

### **Saturday, November 26 – Lew Wallace Hoosier Author Fair**

Our annual author fair is held at Fusion 54 on Small Business Saturday, in conjunction with Crawfordsville Main Street’s Downtown Party Night. Authors from Crawfordsville and around the state will have books and related merchandise for sale. They are happy to sign books and discuss writing with attendees. Times to be determined. Learn more in our fall issue.

**Friday, December 2, 3 - 6 p.m. – Holiday Tea & Fashion Show**. This fundraiser, held at the Elston Homestead, will showcase a selection of sweet and savory treats, holiday music, an interactive fashion show presented by heathcliff, and more. Learn more in our fall issue.



# ArchiCamp a Success!

**Amanda McGuire**  
*Associate Director*

The General Lew Wallace Study & Museum would like to thank everyone who made the year's ArchiCamp a success. After a two-year break due to the COVID-19 pandemic, we had our largest ArchiCamp ever! The twenty elementary and middle-school aged children who attended had a wonderful time making new friends and experiencing learning in a new way.

On Tuesday, students went on a behind-the-scenes tour of the Study building and learned about Lew Wallace. In the afternoon, the students designed and made plaster medallions and walked downtown to tour The Masonic Cornerstone Grand Hall & Event Center. We also visited the Carnegie Museum of Montgomery County to learn about the large mural of local sites in their entryway.



*ArchiCampers check out the brick exterior of the Masonic Cornerstone building with Judi Kleine*



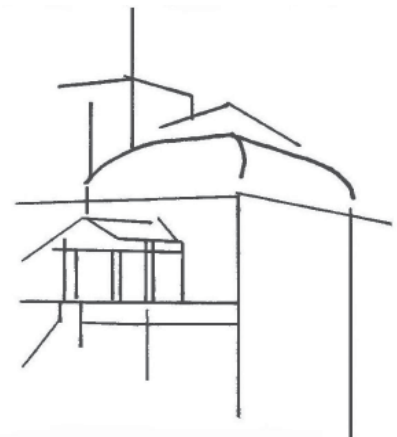
*ArchiCampers pose for a photo at the Study*

A special thank you to Judi Kleine for leading the kids on an architectural tour at The Masonic Cornerstone! Thank you, also, to Kathy Brown at the Carnegie Museum for discussing the mural with the kids!

On Wednesday, students created stained glass “windows” using mosaic tiles. We went on a walking tour of Elston’s Grove and learned about different architectural styles that were popular in Crawfordsville during Lew Wallace’s lifetime. In the afternoon they built and painted their own birdhouses - they were very creative with their paint jobs! Each camper also designed and built their own personal study using recycled materials.

We would like to thank our sponsors for making this camp possible: Crawfordsville Main Street, Montgomery County Extension Homemakers, Montgomery County Retired Teachers Association, Psi Iota Xi – Gamma Xi Chapter, INFBPW Crawfordsville, James Brown, and Marie Stocks.

Also, a huge thank you to Jan Cain and Owen Bennett for their help throughout the camp!



## **General Lew Wallace Study & Museum Contributions Received March 16, 2022 through June 30, 2022**

*Every member and donor matters a great deal to us and we appreciate your support. We have made every attempt to ensure the accuracy of this list. If we have made an error in your listing, please contact us immediately.*

### **Memberships**

#### **Ben-Hur**

Gail & Michael Stephens

#### **Ambassador**

Jill & John Capper  
Barb & Steve Carver  
Susie & Sam Hildebrand  
Sue & Jeff Lucas  
Molly & Jerry Spillane

#### **Governor**

Trudy & Ron Dickerson  
Jamie & Scott Douglas  
Ruby Elliott  
Nicole & Mike Hazlett  
Diane Kreisher  
Irmingard McKinney  
Dale Milligan  
Donald Rerick  
Susie & Harry Siamas  
Suzanne & Dennis Slovacek  
Eatha & Chuck Sommer  
Karen & Byron Thada

#### **Major General**

Patience & Jim Barnes  
Margo Campanelli  
Kathy & Rusty Carter  
Mary Ann & Jerry Day  
Christine Guyonneau & Tom  
Mason  
Judith Leuck  
Rhonda & Mike Mitchell  
Diane Quinn  
Janet & Barrett Robinson

#### **Lieutenant**

Linda Brady  
David Chidester  
Anthony Deany

Richard W. Frank  
Ivan D. Lancaster  
Rita Kirkpatrick  
Betty Sheets

### **Annual Fund**

Betty & John Culley  
Kathy & Rusty Carter  
Suzanne & Dennis Slovacek

### **TASTE!**

#### **Title Sponsors**

Acuity Brands  
Hoosier Heartland State Bank  
Howard Miller  
Market Street Wealth  
Management Advisors -  
Jessica L. Bokhart, CFP®  
Montgomery County Tourism  
Commission  
*The Paper of Montgomery  
County*  
Teachers Credit Union  
Tri-County Bank & Trust

#### **Contributing Sponsors**

Anonymous  
Cook Home Services  
First Merchants Bank  
The Juniper Spoon  
Nucor Steel Indiana  
Sanders-Preibe Funeral Care  
Valero Renewables - Linden  
Wabash College  
Walden Transport & Recycle  
WCDQ/WCVL/WIMC

#### **Supporting Sponsors**

Alvin Lee & Esther Thornton  
Arthur's Excavation  
Burkhart Funeral Home

#### **Color Art**

Davis Morrison Realty  
Gould Body & Paint  
Henthorn, Harris & Weliever  
Indiana American Water Co.,  
Inc.  
Industrial Federal Credit Union  
J.M. Thompson Insurance  
*Journal Review*  
The Kids' Dentist  
LSC Communication  
Mike Reidy  
Mischler Dental  
NFP Insurance  
Northridge Chiropractic  
nPrint  
Pace Dairy Foods  
Sugar Creek Eyecare  
Taylor, Chadd, Minnette,  
Schneider & Clutter, P.C.  
Watson Dental

#### **Other Sponsors**

Crawfordsville Oral Surgery

#### **Adopt-A-Spot Sponsors**

Betty & John Culley  
Kathy & Rusty Carter

#### **ArchiCamp Sponsors**

Crawfordsville Main Street  
INFBPW/Crawfordsville  
Montgomery County Extension  
Homemakers  
Montgomery County Retired  
Teachers Association  
Psi Iota Xi - Gamma Xi Chapter  
James Brown  
Marie Stocks



# Study Scrapbook



*Left: Lew and Susan's great-great-granddaughter, Anne Drake, and great-great-grandchildren, Ross Sylvestri and Kathy Gosse, visited the museum in July  
Right: ArchiCampers work hard to create their own buildings out of recycled materials*



## **General Lew Wallace deserves his place in history. Help us preserve that place.**

Membership to the **Lew Wallace Study Preservation Society** begins with your annual contribution of \$25 or more. Membership offers discounts and complimentary admission and event tickets.

**Lieutenant Level—\$25 (Individual)**

- Complimentary admission for 1
- Subscription to newsletter

**Major General Level—\$50 (Family)**

- Complimentary admission for family
- Subscription to newsletter

**Governor Level—\$100 (Sustainer)**

- Major General-level benefits, plus
- 10% discount in museum shop



**Ambassador Level—\$250 (Benefactor)**

- Governor-level benefits, plus
- 2 tickets to the annual Taste of Montgomery County

**Ben-Hur Level—\$500+ (Patron)**

- Ambassador Level benefits, plus
- 1 ticket to the annual Holiday Tea

Name \_\_\_\_\_  
 Address \_\_\_\_\_  
 City \_\_\_\_\_ State \_\_\_\_\_ Zip \_\_\_\_\_  
 Phone number \_\_\_\_\_ e-mail \_\_\_\_\_

*Please clip & mail your membership information to LWSPS, PO Box 662, Crawfordsville, IN 47933*

- Enclosed is my check payable to the Lew Wallace Study Preservation Society
- I will pay with credit card online  
 Please visit [www.ben-hur.com/join-support](http://www.ben-hur.com/join-support) to pay for your membership with a credit card via Paypal
- I wish to remain anonymous
- I'm declining benefits, making my contribution deductible to the full extent of IRS regulations.



**GENERAL LEW WALLACE STUDY & MUSEUM**

200 Wallace Avenue / PO Box 662  
Crawfordsville, Indiana 47933  
Phone: 765-362-5769  
Email: [study@ben-hur.com](mailto:study@ben-hur.com)  
[www.ben-hur.com](http://www.ben-hur.com)

PRST STD Nonprofit US Postage Paid Crawfordsville IN Permit No. 8
---

**RETURN SERVICE REQUESTED**

---

## 2022 Summer & Fall Events Calendar

August 27 - The 15th annual **TASTE of Montgomery County** will take place on museum grounds from 12–10 p.m. and feature live music and scrumptious food from local restaurants. Mark your calendars to join us!

September 15 - Jessie MacLeod presents “The Mount Vernon Ladies’ Association: 162 Years of Collecting George Washington” as part of our **Dr. Howard Miller Lecture Series** at 7 p.m. Free. RSVP required.

September 17 - Join the museum as we celebrate **Smithsonian Museum Day Live!** Enjoy free admission with a printable Smithsonian pass. See page 6 for more details.

September 29 - Suzanne Hahn from the Indiana Historical society will present on The Collections of the Indiana Historical Society as part of our **Dr. Howard Miller Lecture Series** at 7 p.m. Free. RSVP required.

October 6 - The **Dr. Howard Miller Lecture Series** continues with Kathleen Langone’s program on Finding Amalia Kussner at 7 p.m. Free. RSVP required.

October 20 - The **Hoosier Authors Book Club** will meet to discuss *Always a River: The Ohio River and the American Experience* at 7 p.m. inside the Carriage House Interpretive Center. Free. RSVP required.

October 27 - The **Dr. Howard Miller Lecture Series** continues with Peter Hatch’s presentation on Thomas Jefferson’s Revolutionary Garden at Monticello at 7 p.m. Free. RSVP required.

November 17 - The **Hoosier Authors Book Club** will meet to discuss *All These Beautiful Strangers* at 7 p.m. Free. RSVP required.

November 26 - **Lew Wallace Hoosier Author Fair** at Fusion 54.

December 2 - **Holiday Tea & Fashion Show** from 3–6 p.m.