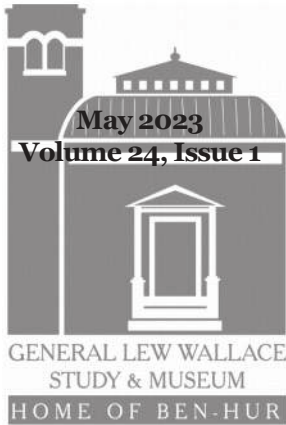




# FROM THE STUDY



## “Selling Ben-Hur” Exhibit Open

*Larry Paarlberg*  
Director

Each year, the General Lew Wallace Study & Museum creates an exhibit that looks at some aspect of Lew Wallace. This year we are pleased to announce the opening of our 2023 exhibit “Selling Ben-Hur: The Novel, Marketing, and Material Culture” in the Carriage House Interpretive Center.

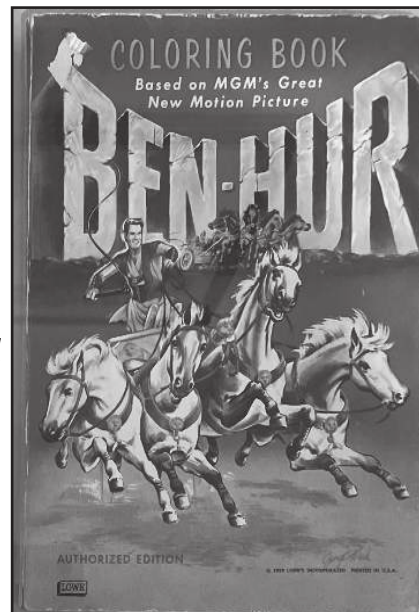
“My God, did I set all of this in motion?” When Lew Wallace spoke these words in 1899 after seeing the staged production of *Ben-Hur* on Broadway, he could not have imagined all that he did actually set in motion. *Ben-Hur* has commanded the nation’s attention for over 140 years. The book is a presence in both popular and material culture

unlike any other work of fiction before it. Scholars continue to study Lew Wallace and *Ben-Hur* for the impact the book and its many iterations have had

culture, becoming a commercial brand unto itself, presented on thousands of products.

The 2023 exhibit examines the many ways *Ben-Hur* impacted modern marketing, material culture, Hollywood, and more. Examples of how *Ben-Hur* was used locally, nationally, and world-wide are on display. There are QR codes to hear two of the dozens of *Ben-Hur* songs that have been composed since the 1880s and reproductions of the 1950 *Ben-Hur* Burma Shave slogan line the walkway to the Study.

The exhibit may be viewed free of charge from 10 a.m. to 5 p.m. Tuesday through Saturday.



*Ben-Hur Coloring Book*

on Christianity and world religion. Beyond scholarly interest, this work of fiction has changed the course of modern material

### Inside This Issue

Notes from the Director	2
Welcome to Lew’s Crew	3
16th TASTE!	3
The Trouble With Camels	4
Book Club	6
Archicamp	7
Sponsor Appreciation	8
Study Scrapbook	9
From the Arboretum	10
Adopt-A-Spot	11
Events Calendar	12

The General Lew Wallace  
Study & Museum

**Mission**

is deeply committed  
to the protection  
and preservation  
of Lew Wallace’s  
legacy now and for  
generations to come.

## Board of Trustees

*President*  
**John Culley**

*Vice President*  
**S. Chandler Lighty**

*Treasurer*  
**Byron Thada**

*Secretary*  
**Erin Gobel**

*Ex Officio*  
**Fawn Johnson**

**Joey Gerold**

**J. Lamont Harris**

**Nicole Hazlett**

**Judith Kleine**

**Susan Rosen**

**Cindy Smith**

**Gerry Turner**

**Bronwen Wickkiser**

### Museum Staff

*Director*  
**Larry Paarlberg**  
[lpaarlberg@ben-hur.com](mailto:lpaarlberg@ben-hur.com)

*Associate Director*  
**Thomas Meeks**  
[tmeeks@ben-hur.com](mailto:tmeeks@ben-hur.com)

*Grounds Manager*  
**Deb King**  
[dking@ben-hur.com](mailto:dking@ben-hur.com)

**765-362-5769**  
[study@ben-hur.com](mailto:study@ben-hur.com)



**@WallaceStudy**

## Notes From The Director



*Ben-Hur* has cast a long shadow on Crawfordsville for almost 150 years. Its local recognition is so ingrained

that it has been included in the City marketing for generations and happily continues to be sent across the country as part of Crawfordsville's new branding. *Ben-Hur* has carried the name of Crawfordsville around the globe. In 2022 alone the General Lew Wallace Study & Museum hosted many thousands of people from at least thirty-seven states and eight different countries.

As far as we know, Lew Wallace was the only Civil War General to have penned a novel. Many of the military leadership from the Civil War, North and South, wrote important works after the war, but Lew Wallace was unique in writing a work of fiction—and unique in how that work of fiction exploded in popular culture. No other written work has had the impact in literature, on stage, in film, in popular culture, and in material culture. The impact on material culture is certainly evident in Crawfordsville—with the Ben Hur building, The Supreme Tribe of Ben-Hur, the Ben Hur Home, the Ben Hur racetrack, Ben Hur interurban rail line,

Ben Hur Dairy, Ben Hur Moving, and so many more businesses that capitalized on the legacy of this fictional character.

In capitalizing on the name *Ben-Hur*, Crawfordsville is not unique. In our exhibit this year, we highlight just a few of the thousands of products, businesses, places, and things named Ben-Hur. It was a fun exhibit to put together, but it required a lot of choices regarding what to include and what to leave out—decisions, decisions! We were able to include new accessions to the collection in this exhibit making it current as far as our collecting of historic artifacts goes and we included a new book with a 2023 date of publication to demonstrate that *Ben-Hur* continues to increase its impact on material culture.

We are actively working on our public programs for the coming year. Please check our social media sites for updates on our public programs and other activities. Even if you don't have time for a tour, we invite everyone to come see the exhibit and enjoy the museum grounds this spring.



## Welcome Tom to Lew's Crew

Stephanie Cain arrived to work at the General Lew Wallace Study & Museum in 2012 as our Visitor Services staff member. This spring, she left the museum when she accepted a position at Wabash College. She was often the first face that people saw when they visited the museum being that her desk served as our welcome center. Her knowledge on the Civil War was greatly appreciated by our guests and her enthusiasm for sharing all things "Lew" was infectious.

With the departure of Stephanie this spring and Amanda McGuire last fall, the museum conducted an extensive search for someone to fill their positions. It was a long process, but in April, the museum hired Thomas Meeks. A native of McHenry, Illinois, Tom moved

to Indiana in 2012. Tom has an educational background in history with a degree from Purdue University, where his research skills gave him the opportunity to not only write, but to also make presentations. He has experience in museum collections care, public relations, and has great experience with many of the computer programs that we use on a regular basis — a talent that we need!

Tom comes to us from the Carnegie Museum of Montgomery County where he gained a working knowledge of the community and its rich history. As Associate Director of the Study, Tom will be responsible for visitor services, managing social media, collections, coordinating the summer ArchiCamp program,

as well as tours and research as needed. Tom's wife Heidi, a Wabash College Biology Professor, and their three year old son Henry have been coming to the Study grounds since Henry was born. Stop in soon and quiz Tom on his knowledge of Lew Wallace so we can get him up to speed quickly. We welcome Tom to the General Lew Wallace Study & Museum!



*Associate Director Tom Meeks*

## Save the Date for the 16<sup>th</sup> TASTE

The TASTE of Montgomery County returns for its Sweet 16!! The TASTE will be held on August 26 on the grounds of the General Lew Wallace Study & Museum. Plans are underway, vendors are being researched, and sponsors have been contacted.

In addition to helping the museum, the TASTE has also proven to be a great way to recognize and support our

local food vendors. While we are working on the full line-up of entertainment, we are pleased to announce that our headliner for TASTE 2023 will be Josh Kaufman of Indianapolis. Josh won season 6 of The Voice as a member of Usher's team and had previously been on Adam Levine's team. We have also lined up Midtown Madmen and the Elizabeth Lee Band.

The TASTE is the biggest annual fundraiser for the General Lew Wallace Study & Museum. All proceeds from gate sales directly benefit the Museum's collection and programming. Bring your friends and family for a great day of fellowship and help support the organization that keeps General Lew Wallace's legacy alive for future generations.

## The Trouble with Camels

Larry Paarlberg  
Museum Director

On the morning of Tuesday, October 8, 1901, the population of Montgomery County dropped by almost six hundred people. These locals had boarded the Ben-Hur special, a chartered train with ten coaches bound for the Illinois Theater in Chicago. On the sides of the coaches were long banners that let folks along the Monon route know of the travelers' important purpose and destination.

As the party left Crawfordsville, Engineer Ballenger promised the group a great ride—as long as the engine “kept the rail.” The train made the trip from Crawfordsville to Lafayette in just 49 minutes, which included a stop in Linden and a slow trip through Lafayette. This meant that on the open track, the train ran between 50 and 60 miles per hour!

The destination for the group, the Illinois Theater, had opened the year before on October 15, 1900 and was built on fashionable Jackson Boulevard. When it opened, the first performance was by Julia Marlowe in the very successful “Barbara Fritchie.” Over the years, some of the luminaries

who graced the Illinois Theater stage were Sir Henry Irving (the first actor ever knighted), Dame Ellen Terry, Sir Herbert Tree and Sarah Bernhardt. In addition to the lavish production of Ben-Hur, the Illinois later hosted a number of the Ziegfeld Follies. The last large performance was the 1932 staging of the show *The Band Wagon*. As happened with some of Chicago's other elaborate show palaces, the Illinois was demolished in 1936 to make room for a parking lot.



*Camel from stage play souvenir book.*

However, thirty-five years earlier, in 1901, the theater was a dazzling destination and the trainload of guests from Crawfordsville were thrilled to see the extraordinary production based on the book by Lew Wallace, their friend and neighbor. The locals almost completely filled the main floor

of the theater and as the *Daily News-Review* reported on October 9,

*They also saw two camels that have been on a strike for nearly a week go through their parts for the first time in several days without a hitch. The animals lolled luxuriously on the stage and watched the applauding throng before the footlights with mild curiosity.*

*It was fortunate for the Indianans that the incipient and altogether unique strike*

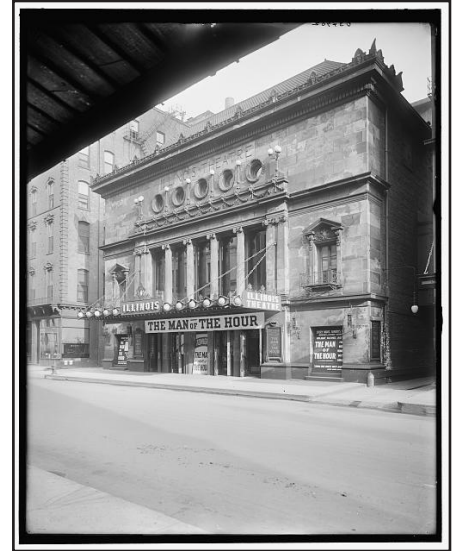
*[by the camels] that had been in force several days was amicably settled Monday evening. The strike, which threatened the production and seriously marred it two or three times last week, was inaugurated by the camels, which for some time past have been showing insubordination. At altogether inappropriate times they have bellowed their protests, and when they lay down on the stage they often refused to arise.*

In an effort to address this strike by the insubordinate camels,

the management of the Illinois finally called in an expert from the Lincoln Park Zoo. After the zookeeper visited with the animals and reviewed the situation, he announced that the camels needed something soft to kneel on as the hard stage floor was hurting the camels' knees. The performance for Lew Wallace's friends and neighbors saw large, soft tapestries pulled from the theater prop department and the camels performed beautifully.

The stage production of *Ben-Hur* ran for almost 21 years on Broadway while carefully

managed and staged travelling productions by the producers, Klaw and Erlanger, took the show far beyond New York. Over the years that the show ran, it is estimated that it was seen by over 20,000,000 people (including the 600 from Crawfordsville). There is no estimate, however, on how many people saw the insubordinate camels perform as flawlessly as they did for the guests from Crawfordsville on the night of October 8, 1901.



*The Illinois Theatre in 1907*

## **General Lew Wallace deserves his place in history. Help us preserve that place.**

Membership to the **Lew Wallace Study Preservation Society** begins with your annual contribution of \$25 or more. Membership offers discounts and complimentary admission and event tickets.

**Lieutenant Level—\$25 (Individual)**

- Complimentary admission for 1
- Subscription to newsletter

**Major General Level—\$50 (Family)**

- Complimentary admission for family
- Subscription to newsletter

**Governor Level—\$100 (Sustainer)**

- Major General-level benefits, plus
- 10% discount in museum shop



**Ambassador Level—\$250 (Benefactor)**

- Governor-level benefits, plus
- 2 tickets to the annual Taste of Montgomery County

**Ben-Hur Level—\$500+ (Patron)**

- Ambassador Level benefits, plus
- 1 ticket to the annual Holiday Tea

Name \_\_\_\_\_

Address \_\_\_\_\_

City \_\_\_\_\_ State \_\_\_\_\_ Zip \_\_\_\_\_

Phone number \_\_\_\_\_ e-mail \_\_\_\_\_

*Please clip & mail your membership information to LWSPS, PO Box 662, Crawfordsville, IN 47933*

- Enclosed is my check payable to the Lew Wallace Study Preservation Society
- I will pay with credit card online

Please visit [www.ben-hur.com/join-support](http://www.ben-hur.com/join-support) to pay for your membership with a credit card via Paypal

- I wish to remain anonymous
- I'm declining benefits, making my contribution deductible to the full extent of IRS regulations.

## Book Club Marks Seventh Year

The Hoosier Authors Book Club began as part of our Indiana State Bicentennial programming for 2016. The Museum's 2016 exhibit discussed the Golden Age of Indiana Literature. This Golden Age began with the publication of Lew Wallace's *Ben-Hur*. It included prominent novelists such as Crawfordsville native Meredith Nicholson, Booth Tarkington, Gene Stratton-Porter, and others. The book club has proven to be a popular program with almost 40 books on a wide range of subjects having been read since 2016.

The meetings are at 7:00 p.m. EDT in the Lew Wallace Carriage House. The books selected this year have a theme of diversity, of inclusion, and exclusion. They help to demonstrate the broad range of Hoosier literature—historic and current—that is available!

The Hoosier Authors Book Club began its year with a discussion on Meredith Nicholson's *A Hoosier Chronicle* in April. Published in 1912, this book begins with a mystery involving the death of the daughter of a professor at a local college. As the story unfolds it relates the working of Indiana's political machines and powerful political bosses.

The other books for 2023 are:  
**June 22, 2023** – *Somebody's Daughter* by Ashley C. Ford.

This is an Amazon Best Book of June 2021 and is a special memoir by the author. She is candid, inquisitive, vulnerable, and present in the moments she shares—especially those of her childhood. From the absence of her father and the shocking revelation of his incarceration, to the grandmother she adored, and the men who both protected and hurt her, *Somebody's Daughter* shows how people and the critical moments—both big and small—can become hardwired into our lives and affect the way we react to and experience the world.

**July 20, 2023** – *The Book of Delights* by Ross Gay. This book is a winner of the NBCC Award for Poetry and offers up a spirited collection of short lyrical essays, written daily over a tumultuous year, reminding us of the purpose and pleasure of praising, extolling, and celebrating ordinary wonders.

In *The Book of Delights*, one of today's most original literary voices offers up a genre-defying volume of lyric essays written over one tumultuous year. The first nonfiction book from award-winning poet Ross Gay is a record of the small joys we often overlook in our busy lives. Among Gay's funny, poetic, philosophical delights: a friend's unabashed

use of air quotes, cradling a tomato seedling aboard an airplane, and the silent nod of acknowledgment between the only two black people in a room. But Gay never dismisses the complexities, even the terrors, of living in America as a black man or the ecological and psychic violence of our consumer culture or the loss of those he loves. More than anything else, though, Gay celebrates the beauty of the natural world—his garden, the flowers peeking out of the sidewalk, the hypnotic movements of a praying mantis.

*The Book of Delights* is about our shared bonds, and the rewards that come from a life closely observed. These remarkable pieces serve as a powerful and necessary reminder that we can, and should, stake out a space in our lives for delight.

**September 21, 2023** – *A Place Called Hope* by Phillip Gulley. When Quaker Pastor Sam Gardner is asked by the ill Unitarian minister to oversee a wedding in his place, Sam naturally agrees. It's not until the couple stands before him that he realizes they're two women. In the tempest of strong opinions and misunderstandings that follows the incident, Sam faces potential unemployment. Deeply discouraged, he

*cont. on page 10*

## Exhibit, continued

“Selling Ben-Hur: The Novel, Marketing, and Material Culture” will run through December 2023.

The Study is open for guided tours as well. The Museum

requests visitors seeking a guided tour of the Study book their appointment ahead of time, but walk-ins will be welcome and accommodated. Tours last approximately one hour

and are \$7 for adults and \$3 students 13-18, or \$1 for students 7-12. Under 6 free.

## ArchiCamp Returns this Summer

Since 2013, we have offered ArchiCamp as our summer camp option for students age 8-12. This year is will be from 9:00 a.m. to 3:00 p.m. on June 27 and 28 and costs \$25. This program has proven very popular with both students and their parents and won the 2022 Sandi Servaas Memorial Award from Indiana Landmarks.

We limit attendance to approximately fifteen students allowing for maximum participation by each student. Our activities change a little each year, but past hands-on activities have included building birdhouses, making decorative plaster rosettes, and recreating local architectural landmarks out of cardboard boxes. These projects encourage development of critical thinking skills. We take students on an architectural walking tour highlighting many of the Victorian homes in the neighborhood in an effort to instill an interest in architecture and local history.



*ArchiCamp Participants in take a closer look at the architecture of the Masonic Temple*

This is also used to encourage critical observation and discussion skills.

Each year we give students a behind the scenes tour of the Lew Wallace Study and of a selected local building. Often these local buildings are undergoing restoration so the students receive a “hard-hat” tour of projects underway.

To develop writing skills, students compose individual thank you letters that are sent to camp sponsors.

In order to provide this experience to students for only \$25, we rely on donations from organizations, businesses, and individuals to sponsor students for \$75. Plans for 2023 are still being developed, but we are excited about the 2023 class of ArchiCampers. If you are interested

in sponsoring a local child, or if you would like to register a student for ArchiCamp, contact the museum at: [study@ben-hur.com](mailto:study@ben-hur.com) or call us at (765) 362-5769.

Our sponsors to date are: Psi Iota Xi-Gamma Xi Chapter, Crawfordsville Main Street, Crawfordsville Moose Lodge #6, Montgomery County Extension Homemakers, American Legion Byron Cox Post 72, Montgomery County Retired Teachers, and Marie Stocks.

## General Lew Wallace Study & Museum Contributions

### Received November 1, 2022 through March 31, 2023

*Every member and donor matters a great deal to us and we appreciate your support. We have made every attempt to ensure the accuracy of this list. If we have made an error in your listing, please contact us immediately.*

#### Memberships

##### Ben-Hur

Diane & Mike Beemer  
Sherry & Monty Harris  
Linda & Dale Petrie  
Debra & Mike Rodebaugh

##### Ambassador

Roger Adams  
Chris & Jim Amidon  
Betty & John Culley  
Sandy & Rex Henthorn  
Annette & Larry Hutchison  
Blair Miller & Gregory Leddy  
Molly & Jerry Spillane  
Gail Stephens

##### Governor

Carolyn & Jon Baer  
Lorena & Jim Elmore  
Katherine H. Fox  
Erin & Kyle Gobel  
Christine Guyonneau & Tom Mason  
Sheridan & David Hadley  
Kitty & Herm Haffner  
Lester Hearson  
Susan Henson  
Michael Humnicky  
Betsy Johnson  
Cheryl & Brian Keim  
S. Chandler Lighty  
Kathy & Mark McClamroch  
Franklin Moore  
Nancy & Greg Morrison  
Rees & Wayne Olander  
Sharon & Scott Parker  
Emily & Kevin Runion  
Eatha & Chuck Sommer  
Patty & Jon Sommer  
Ashley & Aaron Spolarich  
Joann & Michael Spragg  
Robyn & Bernie Thompson

Gerry Turner  
Nancy & Larry Van Arendonk  
Beth & Dick Walker  
Nancy & Richard Williams

##### Major General

Ellen Ball & Tom Twarek  
Jean & Mike Bristol  
Jan & Roger Cain  
Barb Easterling  
Shirley Fruits  
Fred Gaske  
Sharon Gerow  
James Glass  
Becky & Brad Hurt  
Ruth Ann Kingery  
Mary Kummings  
William Kummings  
Cindy & Tim McCormick  
Irmingard McKinney  
Gail & Robin Pebworth  
Janet & Barrett Robinson  
Linda & Bob Sabol  
Bronna & Peter Utterback  
Leslie & Charlie Warren

##### Lieutenant

Nancy Bowes  
Christie Byun & Ethan Hollander  
David Chidester  
Joyce Grimble  
Dorothy Lunning  
Ruth Ann & Kenneth Newnum  
Linda & Bruce Novak  
Marty Pool  
Susan Rosen  
Betty Sheets  
Joann Troxel  
Barbara Virgin

##### Annual Fund

Ellen Ball & Tom Twarek  
Charles G. Beemer

Diane & Mike Beemer  
Rachel Brown  
Richard T. Buck  
Jan & Roger Cain  
Jill & John Capper  
Kathy & Rusty Carter  
Barb & Steve Carver  
Elaine & Rick Chase  
Kenn Clark  
Betty & John Culley  
Diane Green  
William Hale  
Dee & Dennis J. Hohlbein  
Helen & Marc Hudson  
Diane Kreisher  
Ivan D. Lancaster  
Judy Michal  
Blair Miller & Gregory Leddy  
Howard Miller  
Dale Milligan  
Suanne & Tom Milligan  
Nancy & Doug Mills  
Nancy & Greg Morrison  
Jon Pactor  
Ruth Ann & Edward Quick  
Nancy Rater  
Debra & Mike Rodebaugh  
Susan Rosen  
Jane Schultz  
Cindy & Jerry Smith  
Joann & Michael Spragg  
Marie & Tom Stocks  
Kelly & Dan Taylor  
Robyn & Bernie Thompson  
Sandy & John Tidd  
Brian Trumbore  
Chris & Pat White  
Nancy & Richard Williams  
Beverly & Jack Wyatt  
Patricia Zorger

*cont. on page 9*



# Contributions, continued

## The TASTE!

### Title

Hoosier Heartland Bank  
 Market Street Wealth  
 Management Advisors -  
 Jessica L. Bokhart, CFP®  
 Dr. Howard Miller  
 Nucor  
 Tri-County Bank & Trust

### Contributor

Anonymous  
 Allen Monument  
 Cook Home Services  
 The Juniper Spoon  
 Nucor Steel Indiana  
 Sanders Funeral Care  
 Valero Renewables-Linden

### Supporter

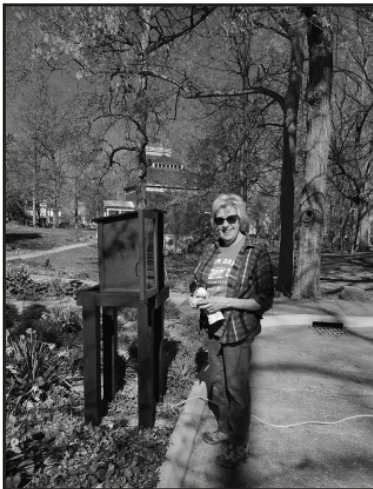
Arni's  
 Arthur's Excavation & Farm  
 Drainage  
 Burkhart Funeral Home  
 Crawfordsville Oral Surgery  
 Gobel, Justice & Pyle  
 Henthorn, Harris, & Weliever  
 Indiana American Water Co.,  
 Inc.  
 LSC Communication  
 Pace Dairy  
 Swift Land Consulting  
 Taylor, Minnette, Schneider  
 and Clutter, P.C.  
 The Juniper Spoon

## Adopt-A-Spot

Ellen Ball/Tom Twarek  
 Barb & Steve Carver  
 John & Betty Culley  
 Rick & Elaine Chase  
 Suanne & Tom Milligan  
 Helen & Marc Hudson  
 Roger & Jan Cain  
 Rusty & Kathy Carter  
 Blair Miller  
 Jerry & Cindy Smith  
 Mike & Diane Beemer  
 Chuck Beemer



## Study Scrapbook



*Clockwise from top left: Elaine Chase at the new little free library; Holiday Tea 2022; Larry Paarlberg, Mayor Todd Barton, Steve McLaughlin during Arbor Day Tree Planting; Earl the Squirrel enjoying the Easter Egg Hunt; Bernie and Robyn Thompson on Park Day 2023.*



## Programming, continued

wonders if his pastoral usefulness has come to an end. After all, his wife has found a new job at the library, his elder son is off to college, and the younger has decided to join the military once he graduates high school. Sam is contemplating a future selling used cars when he receives a call from a woman in the suburban town of Hope, Indiana.

It seems Hope Friends Meeting is in desperate need of a pastor. Though they only have twelve members, they also have a beautiful meetinghouse and a pie committee (Sam is fond of pie). But can he really leave his beloved hometown of Harmony?

2023 Hoosier Author Book Club Books dates are subject to change so please check our

website: [ben-hur.com](http://ben-hur.com) or call us at: 765-362-5769.



## From the Arboretum

**Deb King**

**Grounds Manager**

The long, dreary days of winter have melted away and an explosion of color has occurred at the Museum. Crocus in yellow, purple, and white litter the hillside among blue scilla. Daffodils in yellow and white, with hints of orange started blooming in March. A heavy freeze in mid-March had the magnolia buds turning brown but Mother Nature persevered and the buds opened to beautiful colors of lovely pale pink and magenta.

Park Day, held in conjunction with American Battlefield Trust, was held on April 15th. Volunteers painted railings and posts, spread mulch on the gardens, added QR codes to the interpretive signs, filled a trailer with fallen branches, prepared lawn areas for grass seed and raked leaves. Even though the majority of leaves are mulched,

beech and oak leaves that fall in late fall and early winter are collected and taken to the local yard waste facility. Volunteers came from as far away as Michigan!

The Museum saw two Indiana native species introduced to its arboretum on Arbor Day. Allegheny Serviceberry, *Amelanchier laevis*, is a small tree with white early spring blossoms and beautiful red/orange fall coloring. The fruit of the serviceberry provides food for wildlife. The American Hornbeam, *Carpinus caroliniana*, is a good understory tree in a natural setting. It has bluish-grey bark with dark green leaves that turn yellow to orange in the fall. The Museum will continue planting natives, whether trees or perennials, throughout the grounds.

The grounds and gardens thrive thanks to the Adopt-A-Spot program. Plants, trees, and much needed maintenance funds are provided by these adopters.

To date Adopt-A-Spot supporters are Ellen Ball & Tom Twarek, Betty & Steve Carver, John & Betty Culley, Rick & Elaine Chase, Suanne Milligan, Helen & Marc Hudson, Roger & Jan Cain, Rusty & Kathy Carter, Blair Miller, Jerry & Cindy Smith, Chuck Beemer, Mike & Diane Beemer.



< American Hornbeam leaves and fruit clusters.

"Autumn Brilliance" Serviceberry leaves and developing fruit. >



## Adopt-A-Spot

The grounds of the General Lew Wallace Study & Museum became Lew's sanctuary. Lew often sat in his chair with a lapboard underneath the canopy of a majestic beech tree. Today, many beech trees remain, perhaps descendants of the *Ben-Hur* Beech. Over the last sixteen years, many changes have occurred to the landscape. The reintroduction of native wildflowers, a tree planting program, the recreation of the moat garden, and the continuation of the gardens planted during Lew and Susan's time may not have occurred if it was not for the Adopt-A-Spot program.

The Adopt-A-Spot program invites the public to collaborate with the Museum in maintaining and developing the gardens and arboretum. Community partners can 'adopt' a garden in honor of someone, memorialize a loved one, or advertise a business. Thirteen gardens, named for aspects in General Wallace's life, are available for adoption. A sign with the adopter's name or a memorial sign is placed in the garden. Adopting a garden does not require the adopters work in the garden—staff and dedicated volunteers plant, weed, and water the gardens.



As the Museum strives to maintain the high standards of Lew Wallace's legacy, the Adopt-A-Spot program is a critical component. Over 8,000 visitors visit the grounds, strolling through the arboretum and learning of Lew Wallace's love of the outdoors. For information, please contact the Museum.



## GENERAL LEW WALLACE STUDY & MUSEUM

### Adopt-A-Spot Program



## Be a part of History!

We invite you to partner with us in developing and maintaining the Museum's gardens and arboretum.

The Adopt-A-Spot program brings the community, businesses, and individuals together in preserving a piece of history.

Dedicate a memorial, honor a loved one, or advertise your business with a sign in one of the beautiful gardens.

Over 8,000 yearly museum visitors will see your name literally bloom with an adopted garden.

**Learn how to Adopt-A-Spot Today!**  
**Contact the Museum at [study@ben-hur.com](mailto:study@ben-hur.com)**  
**or 765.362.5769**



**GENERAL LEW WALLACE STUDY & MUSEUM**

200 Wallace Avenue / PO Box 662  
Crawfordsville, Indiana 47933  
Phone: 765-362-5769  
Email: [study@ben-hur.com](mailto:study@ben-hur.com)  
[www.ben-hur.com](http://www.ben-hur.com)

PRsRT STD Nonprofit US Postage Paid Crawfordsville IN Permit No. 8
--

**RETURN SERVICE REQUESTED**

---

## 2023 Spring & Summer Events Calendar

June 22 – The **Hoosier Authors Book Club** will discuss *Somebody's Daughter* by Ashley C. Ford. at 7 p.m. Free. RSVP requested.

June 27-28 – **ArchiCamp** (see page 7 for details)

July 20 – The **Hoosier Authors Book Club** continues with a discussion of *The Book of Delights* by Ross Gay at 7 p.m. Free. RSVP requested.

August 26 – The 16th annual **TASTE of Montgomery County** will take place on the museum grounds and feature scrumptious food from local restaurants and live music. Mark your calendars to join us!

September 21 – The **Hoosier Authors Book Club** will discuss *A Place Called Hope* by Phillip Gully at 7 p.m. Free. RSVP requested.

September 28 – Viewing of 1925 Silent film version of Ben-Hur on Wabash Campus.

Find all of our events on the community calendar with Yodel!

